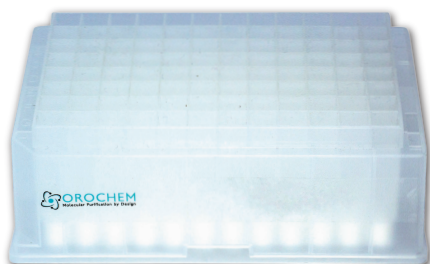
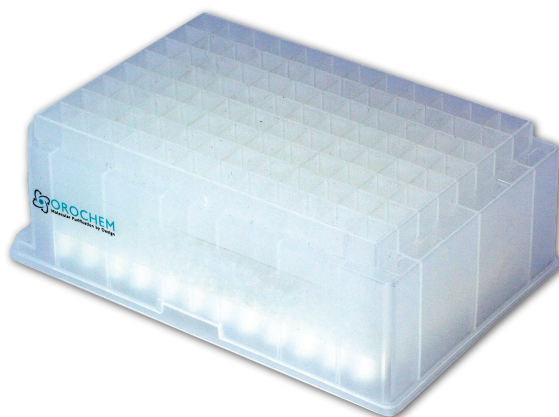


SLLE

Aquamatrix supported liquid-liquid
Extraction Products

Orochem Aquamatrix products are packed with chemically inert material, flux calcined diatomaceous earth. It allows high throughput alternative to traditional liquid-liquid extraction techniques.



Features

- ▶ Cartridges and 96-well plate formats, and 1 mL or 2 mL format available
- ▶ Stable in the pH range 1-13
- ▶ Plates compatible with robotic liquid handling system

Advantages

- ▶ Eliminates steps like mixing, centrifugation and organic phase separation
- ▶ Provides support, greater surface area and accelerated solvent extraction
- ▶ No pre-treatment of the sorbent is necessary

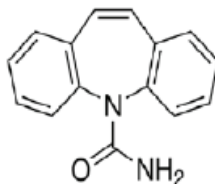
SLLE

Aquamatrix supported liquid-liquid
Extraction Products

Anticonvulsant: Carbamazepine in Human Plasma
Application Note: LLHPG10001

Supported Liquid - Liquid Extraction Plate

Compound:



Carbamazepine

HPLC Method:

Column:	Orochem Reliasil C8 HPLC column 4.6x50mm, 5µm
Part Number:	R3BI-102
Mobile Phase:	Water/ Acetonitrile 65:35
Flow Rate:	0.5mL/min
Injection Volume:	20µL
Retention Time:	3.87 min

MS/MS Conditions:

Mass Spectrometer:	API3000
Ion Source:	Turbo Ionspray
Polarity:	Positive
Scan Mode:	MRM:
	primary, Q1: 237.1, Q3: 194;
	secondary, Q1: 237.1, Q3: 220;
IS:	4000
Temp:	550
DP:	20
CAD:	12
CE:	25
CXP:	15

Results: Recovery (CV%): 83% (2.8%)

Liquid - Liquid Extraction Method:

(Supported liquid - liquid extraction plate)
(Catalog # OC21DA260-HPGB)

Load:
100 µL spiked human plasma (250ng/mL)
with 100 µL water and 20 µL ammonium hydroxide.
Let stand for 5 minutes, then apply a short pulse of
positive pressure.

Elute:
1.5 mL of ethyl acetate twice.
Let solvent stand for 5 minutes, then apply a gentle stream of
positive pressure till all solvent passes through.

Evaporate and Reconstitute:
200 µL of 35% acetonitrile

