

## Matrix C18 HPLC Column

### HPLC Conditions:

**Column:** Matrix C18 HPLC column 2.1x50 mm, 3  $\mu$ m.

**Part number:** R3BE-136

**Mobile phase:**

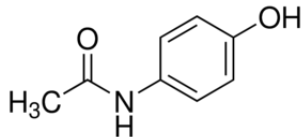
Time (min)	Water	Acetonitrile	1% Formic Acid
0	85	5	10
7	80	10	10
18	30	60	10

**Flow rate:** 0.3 mL/min

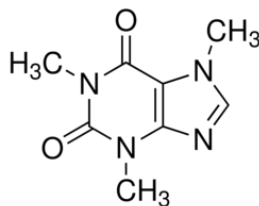
**Injection volume:** 10  $\mu$ L

**Detection:** UV at 260 nm

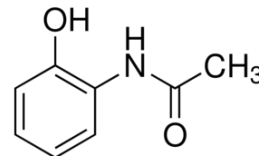
### Compounds:



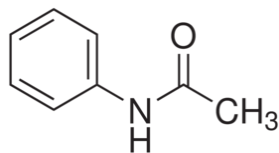
1. Acetaminophen



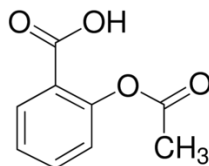
2. Caffeine



3. 2-Acetamidophenol



4. Acetanilide



5. Acetylsalicylic Acid

