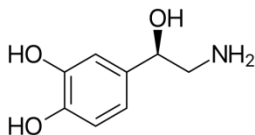
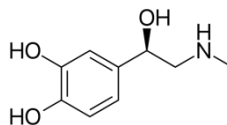


Agility WCX SPE Cartridges

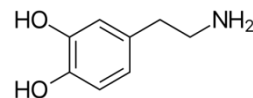
Compounds :



Norepinephrine



Epinephrine



Dopamine

SPE EXTRACTION METHOD:

(Agility WCX SPE cartridge, 30 mg/3cc, SYAG8030-3)

Condition:

1 mL of ACN, followed by 1 mL of 50 mM NH₄AC



Load:

0.2 mL of human urine sample



Wash:

1 mL of 10% methanol, followed by 1 mL of IPA



Elute:

1 mL of 5% formic acid in ACN



Evaporate and Reconstitute:

200 µL of 10% methanol with 0.1% formic acid

HPLC METHOD:

Column:

Orochem Reliasil C18 HPLC column 4.6x50 mm, 3 µm.

Part number:

R3BI-101

Mobile phase:

A: 0.1% formic acid in water
B: 0.1% formic acid in methanol

Gradient:

Initial 1% B for 1 min, then gradient to 50% B at 3 min, and hold 1 min

Flow rate:

0.5 mL/min

Injection volume:

20 µL

Retention times:

Norepinephrine: 1.8 min

Epinephrine: 2.3 min

Dopamine: 3.0 min

MS/MS CONDITIONS:

Mass spectrometer: API3000

Ion source: Turbo Ionspray

Polarity: Positive

IS: 3500

Temp. 400

DP: various by analytes

CAD: 12

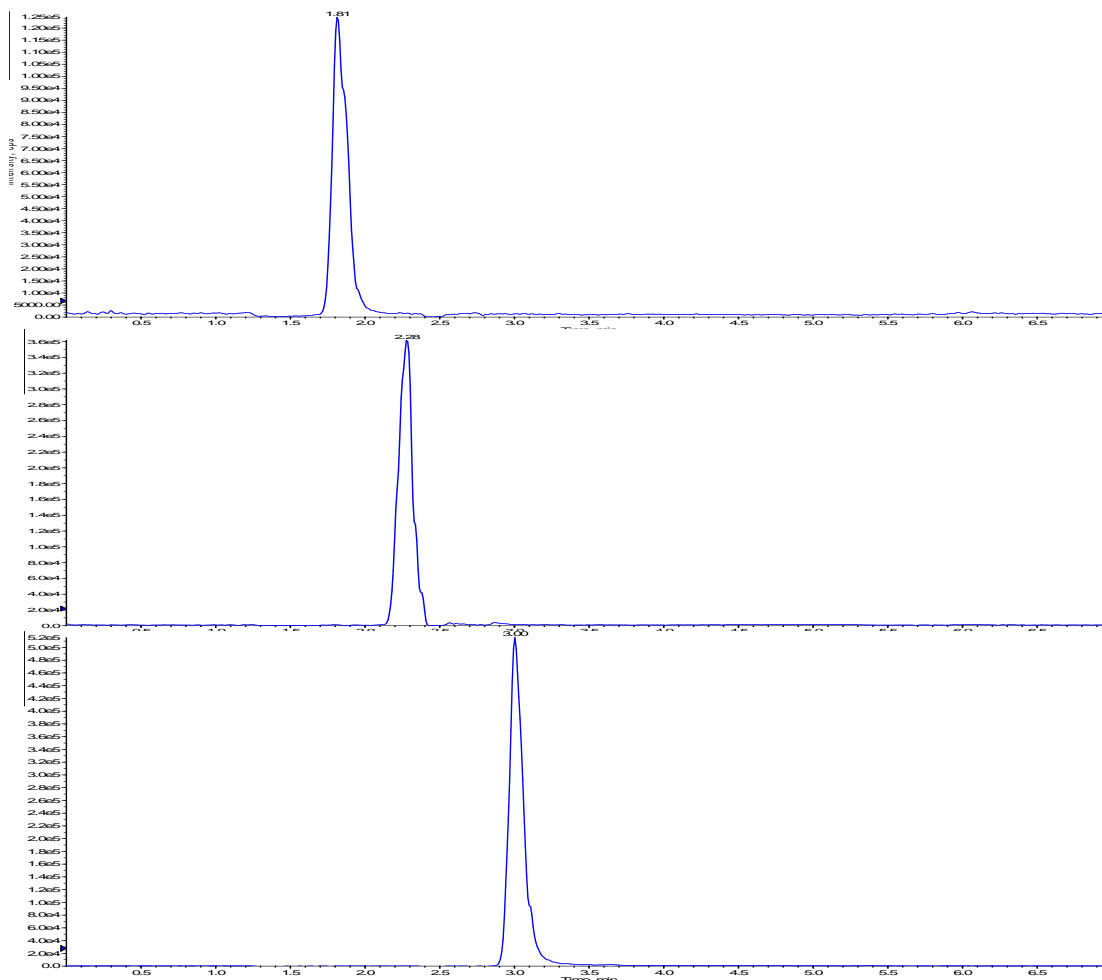
EP: 10

CE: various by analytes

CXP: 10

Scan mode: MRM

Steroids	Quantifier ions	Qualifier ions
	Q1/Q3	Q1/Q3
Epinephrine	184.2/166.2	
Norepinephrine	170.0/152.1	152.1/107.0
Dopamine	154.1/137.2	154.1/191.0



RESULTS:

Chemicals	Norepinephrine	Epinephrine	Dopamine
Recovery(%)	93.9	99.3	86.8
CV(%)	11.6	7.0	11.1