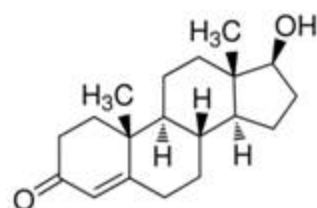
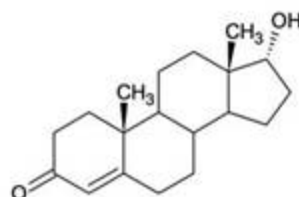


## Matrix Polychrome HPLC Column

### Chemicals:



Testosterone



Epitestosterone

### HPLC Condition:

**Column:** Matrix Polychrome HPLC column 4.6x50 mm, 5  $\mu$ m.

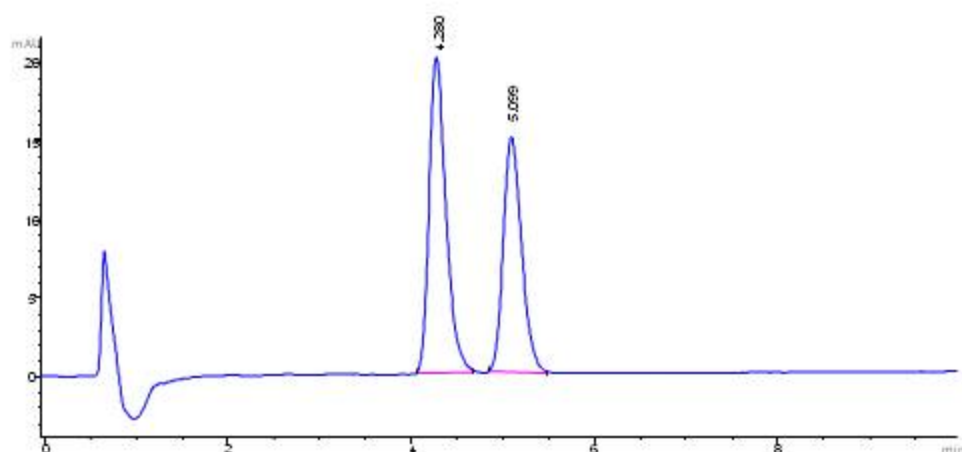
**Part number:** R5BI-968

**Mobile phase:** 0.1% formic acid in Acetonitrile :0.1% formic acid 40:60

**Flow rate:** 0.8 mL/min

**Injection volume:** 5  $\mu$ L

**UV:** 260 nm



Testosterone	4.28 min
Epitestosterone	5.09 min