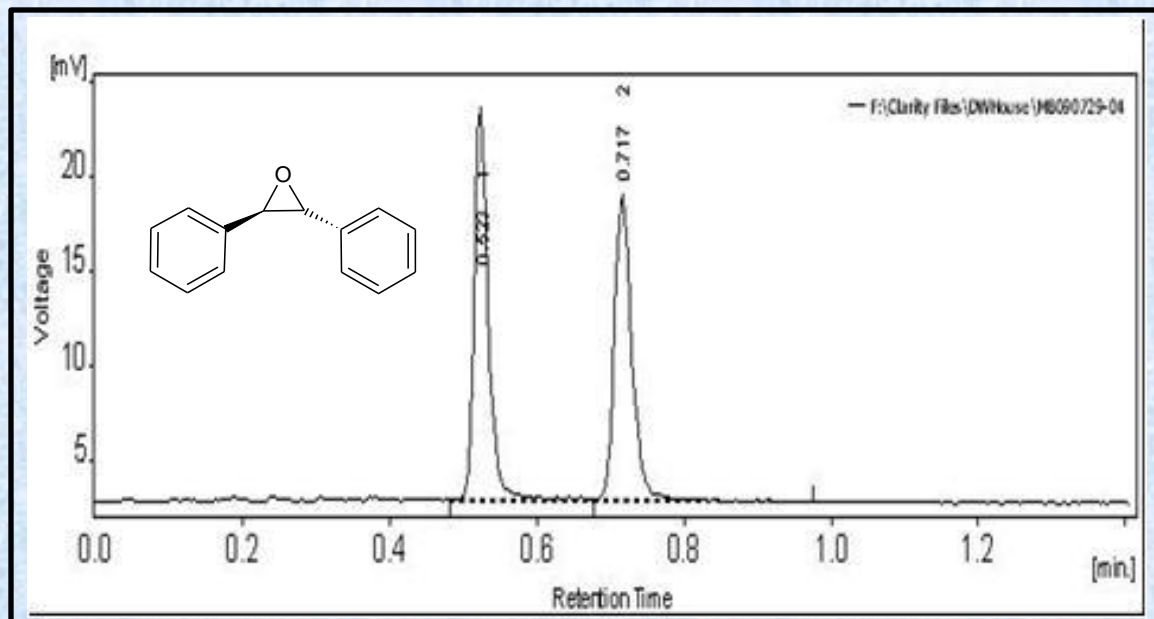


***trans*-Stilbene Oxide on Epitomize CSP-1C, 1.7 μ m, UHPLC**


Column	CSP-1C, 1.7 micron
Column Size	2.1 x 50 mm
Mobile Phase	90/10 heptane/2-propanol
Flow Rate (mL/min)	0.50
Temperature (°C)	Ambient
Detection	UV at 254 nm
Rt1 & Rt2 (min)	0.52 & 0.72
k1 & k2	0.26 & 0.45
Separation Value	1.76