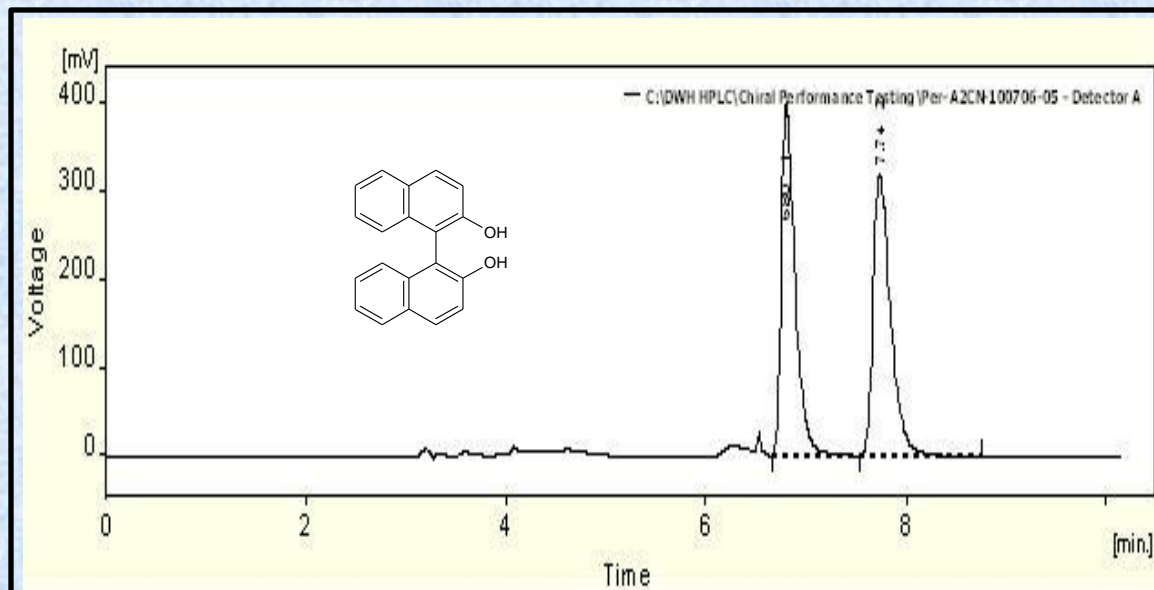


1,1'-Bi-2-naphthol on Epitomize CSP-2C, 5 μ m



Column	CSP-2C, 5 micron
Column Size	4.6 x 250 mm
Mobile Phase	50/50/0.1 Heptane/chloroform/acetic acid
Flow Rate (mL/min)	1.0
Temperature (°C)	30
Detection	UV at 254 nm
Rt1 & Rt2 (min)	6.80 & 7.74
k1 & k2	1.17 & 1.47
Separation Value	1.26