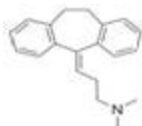


AGILITY DVB SCX SPE CARTRIDGE

Compound: Amitriptyline



SPE EXTRACTION METHOD:

(Agility™ DVB SCX cartridge, 30 mg/1 cc)
(Catalog # OC21AG2030-96)

Condition:

1 mL of methanol, followed by 1 mL of 1% formic acid



Load:

100 µL of spiked human plasma (500 ng/mL analyte)
with 100 µL of 0.5% formic acid



Wash:

1 mL of 1% formic acid, followed by 1 mL of 1% formic
acid in 50% methanol



Elute:

1 mL of 5% NH₄OH in methanol



Evaporate and Reconstitute:

200 µL of mobile phase

HPLC METHOD:

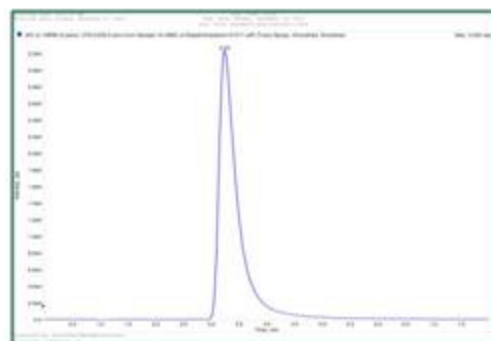
Column: Orochem Reliasil C18
HPLC column 4.6x50 mm, 3 µm.

Part number: R3BI-101

Mobile phase: 40 mM
NH₄AC/methanol/acetonitrile
16:64:20

Flow rate: 0.5 mL/min

Injection volume: 20 µL



MS/MS CONDITIONS:

Mass spectrometer: API3000

Ion source: Turbo Ion spray

Polarity: Positive

Scan mode: MRM: primary, Q1:
278.2, Q3: 233.0; secondary, Q1: 278.2,
Q3: 91.0

IS: 5000

Temp.: 500

DP: 25

CAD: 12

CE: 25

CXP: 15

RESULTS

Recovery (CV%): 102.9% (5.3%)