

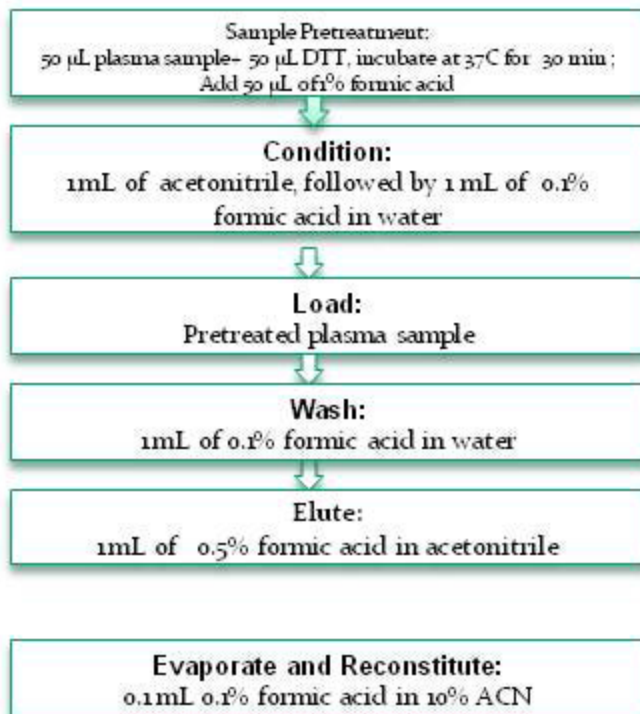
## Celerity Deluxe DVB SPE Cartridges

Compound:

Peptide

### SPE EXTRACTION METHOD:

(Celerity Deluxe cartridge, 30 mg/1 cc, Catalog# SPCY6030-01)



### HPLC METHOD:

**HPLC column:** Reliasil™ C18 50x4.6mm, 3µm  
**Moblie phase:** gradient from 0.1% formic acid in 10% ACN to 0.1% formic acid in 50% ACN  
**Flow rate:** 0.5 ml/min

### MS/MS CONDITIONS:

**Mass spectrometer:** API3000  
**Ion source:** Turbo APCI  
**Polarity:** Positive  
**Scan mode:** MRM:  
**Temp:** 400  
**DP:** 20  
**CAD:** 12  
**CE:** 17

## Results

Recovery: 87%; CV%: 5.6%

