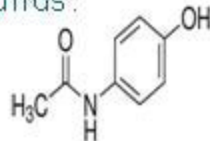
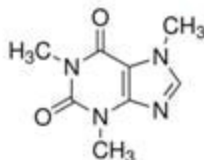


Celerity Deluxe Plate

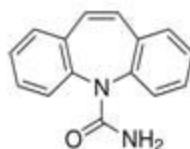
Compounds:



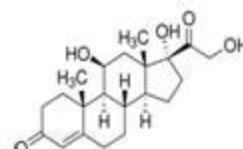
Acetaminophen



Caffeine



Carbamazepine



Hydrocortisone

CELERITY DELUXE SPE EXTRACTION METHOD:

(Celerity Deluxe 2mg/well 0.3 mL 96-well plate, cat. No OC03CY6002)

Condition:

250 µL of methanol, followed by 250 µL of water

Load:

50 µL of spiked human plasma (500 ng/mL)

Wash:

250 µL of 5 % methanol

Elute:

100 µL of 75% methanol

Reconstitute:

Add 50 µL of water and inject into HPLC

HPLC METHOD:

Column:

Orochem Reliasil C8 HPLC column 4.6x50 mm, 3 µm.

Part number:

R3BI-102

Mobile phase:

Acetonitrile in water, gradient from 10% at 2 min to 70% at 8 min; run time, 10 min

Flow rate:

0.5 mL/min

Injection volume:

20 µL

Retention Time:

Acetaminophen – 3.2 min
Caffeine- 4.5 min
Carbamazepine – 7.07 min
Hydrocortisone – 6.51 min

MS/MS CONDITIONS:

Mass spectrometer: API3000

Ion source: Turbo Ionspray

Polarity: Positive

Scan mode: MRM

Acetaminophen – Primary, Q1: 151.9, Q3: 110;
Secondary, Q1: 151.9, Q3: 92.9

Caffeine – Primary, Q1: 195.2, Q3: 138.1;
Secondary, Q1: 195.2, Q3: 110.0

Carbamazepine – Primary, Q1: 237.1, Q3: 194;
Secondary, Q1: 237.1, Q3: 220.0

Hydrocortisone – Primary, Q1: 363.1, Q3: 121;
Secondary, Q1: 363.1, Q3: 327.1

IS: 4000

Temp. 500

DP: 20

CAD: 12

CE: 25

CXP: 10