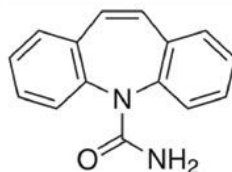


SUPPORTED LIQUID-LIQUID EXTRACTION Plate

Compound: Carbamazepine



LIQUID-LIQUID EXTRACTION METHOD:

(Supported liquid-liquid extraction plate)
(Catalog #OC21DA260-HPGB)

HPLC METHOD:

Column: Orochem Reliasil C8
HPLC column 4.6x50 mm, 5 μ m.
R3BI-102
Part number:
Mobile phase: Water/acetonitrile 65:35
Flow rate: 0.5 mL/min
Injection volume: 20 μ L
Retention time: 3.87 min

Load:

100 μ L spiked human plasma (250ng/mL)
with 100 μ L water and 20 μ L ammonium hydroxide.
Let stand for 5 minutes, then apply a short pulse of positive pressure.

Elute:

1.5 mL of ethyl acetate twice.
Let solvent stand for 5 minutes, then apply a gentle stream of
positive pressure till all solvent passes through.

Evaporate and Reconstitute:
200 μ L of 35% acetonitrile

MS/MS CONDITIONS:

Mass spectrometer: API3000
Ion source: Turbo Ionspray
Polarity: Positive
Scan mode: MRM: primary,
Q1: 237.1, Q3: 194;
secondary,
Q1: 237.1, Q3: 220.0
IS: 4000
Temp. 550
DP: 20
CAD: 12
CE: 25
CXP: 15

RESULTS

Recovery(CV%): 83% (2.8%)

