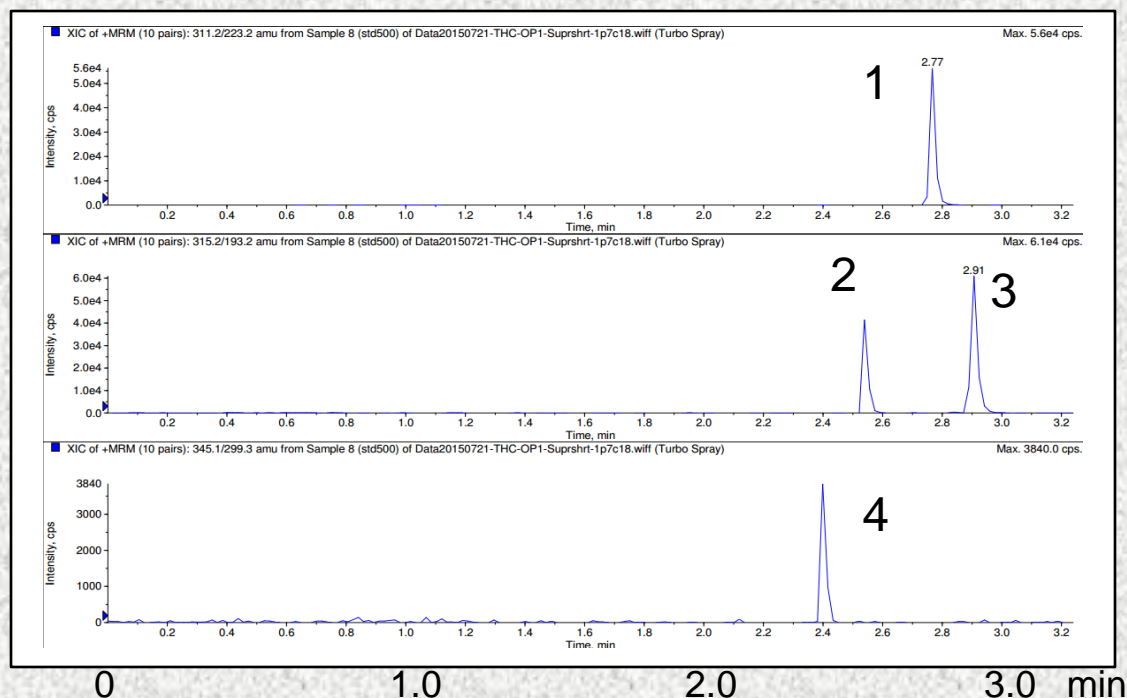


Cannabinoids Separation on Gazelle C18

Use: various medical use



HPLC	Shimadzu HPLC	Mobile Phase	A: 0.1% formic acid B: methanol		
Column	Gazelle C18, 1.7 μm	Flow Rate	0.4 mL/min		
Column Size	2.1 mm ID x 50 mm long	Gradient	Time	A	B
Temperature	25 °C		0.00	90	10
Detection	API 3000 Mass Spec, turbo spray positive ion mode		2.00	0	100
Injection	20 μL		3.00	0	100
			3.01	90	10
			3.25	90	10

		MRM	DP	CE			MRM	DP	CE
1	cannabinol	311/223	60	30	2	cannabidiol	315/193	60	30
3	THC	315/193	60	30	4	THCCOOH	345/299	80	29