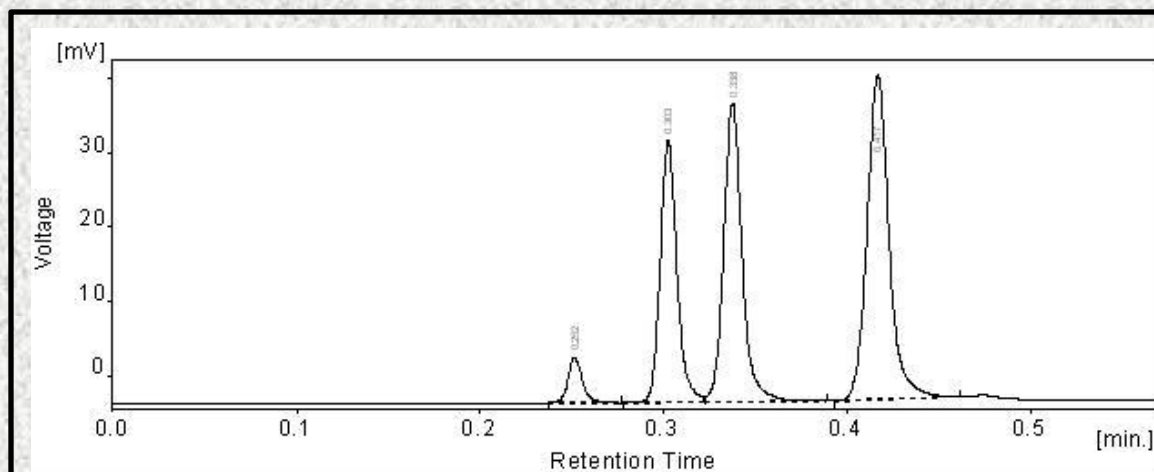


## Separation of Phthalates Gazelle Si, 1.7 $\mu\text{m}$



<b>Naphthalene, R<sub>1</sub></b>	0.252 (15 sec)
<b>Dipropyl phthalate, R<sub>2</sub></b>	0.303 (18 sec)
<b>Diethyl phthalate, R<sub>3</sub></b>	0.338 (20 sec)
<b>Dimethyl phthalate, R<sub>4</sub></b>	0.417 (25 sec)

<b>Column</b>	Gazelle Si, 1.7 micron, 3.0 x 50 mm
<b>Mobile Phase</b>	97/3 heptane/2-propanol
<b>Flow Rate (mL/min)</b>	1.20
<b>System Backpressure, bar</b>	220
<b>Temperature (°C)</b>	27
<b>Detection</b>	UV at 254 nm