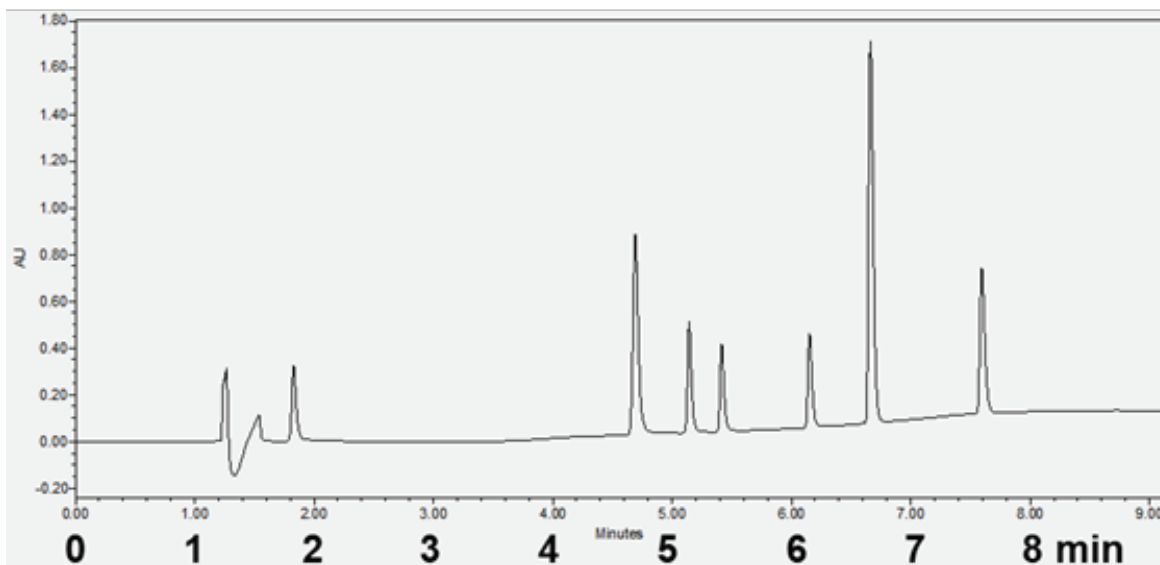


### Separation of Beta Blockers on Gazelle Biphenyl, 1.7 $\mu\text{m}$

Use: Medications to reduce blood pressure



<b>HPLC</b>	Waters UPLC H-Class
<b>Column</b>	Gazelle Biphenyl, 1.7 $\mu\text{m}$
<b>Column Size</b>	2.1 mm ID x 100 mm long
<b>Temperature</b>	45 °C
<b>Detection</b>	UV at 220 nm
<b>Injection</b>	1.0 $\mu\text{L}$
<b>Mobile Phase Gradient</b>	A: Acetonitrile, 0.1% TFA B: Water, 0.1% TFA Time A (%) B (%) 0.00 15 85 1.00 15 85 5.00 50 50
<b>Flow Rate</b>	0.2 mL/min
<b>Sys. Press.</b>	3650 psi

<b>Atenolol</b>	1.83 min
<b>Pindolol</b>	4.69 min
<b>Acebutolol</b>	5.14 min
<b>Metoprolol</b>	5.42 min
<b>Oxprenolol</b>	6.15 min
<b>Propranolol</b>	6.66 min
<b>Carvedilol</b>	7.59 min

