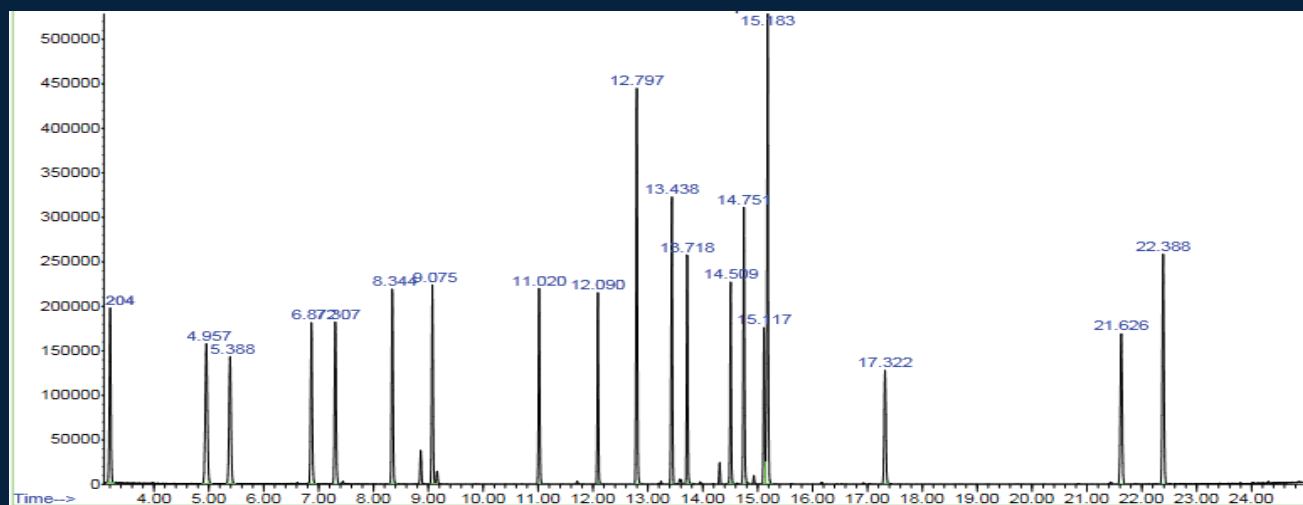


Separation of Terpene Mixture 2 on ARINNA AR-WAX GC Column

Use: food, nutraceutical



| Terpenes | RT (min) |
|---------------------------------------|----------|
| a-pinene | 3.201 |
| b-pinene | 4.946 |
| sabinene | 5.387 |
| g-terpinene | 6.869 |
| (R)-(+)-limonene | 7.31 |
| terpinolene | 8.34 |
| a-terpinene | 9.072 |
| L-(-)-fenchone | 11.023 |
| terpineol (cis-b-) | 12.093 |
| (1R)-(+)-camphor and (1S)-(-)-camphor | 12.797 |
| a-cedrene | 13.438 |
| (1R)-Endo-(+)-fenchyl alcohol | 12.797 |
| pulegone | 14.508 |
| a-humulene | 14.748 |
| a-sabinene hydrate | 15.117 |
| (+)-borneol and (-)-borneol | 15.177 |
| geraniol | 17.317 |
| trans-nerolidol | 21.626 |
| (-)-guaiol | 22.387 |

| | |
|-----------------------------------|--------------------------|
| GC-MS | Agilent 6890- |
| Column | AR-WAX |
| Column Size | 30 m x 0.25 mm x 0.25 µm |
| Injector Temperature | 250 °C |
| Injection | 1 µL |
| Column Flow Rate (mL/min) | 1.2 |
| Standards | Spex cat# CAN-TERP-MIX2 |

| | Rate (°C/min) | Temp (°C) | Hold time (min) | Run time (min) |
|---------|---------------|-----------|-----------------|----------------|
| Initial | | 50 | 5 | |
| Ramp 1 | 10 | 150 | 5 | |
| Ramp 2 | 12 | 220 | 0 | 26.7 |

