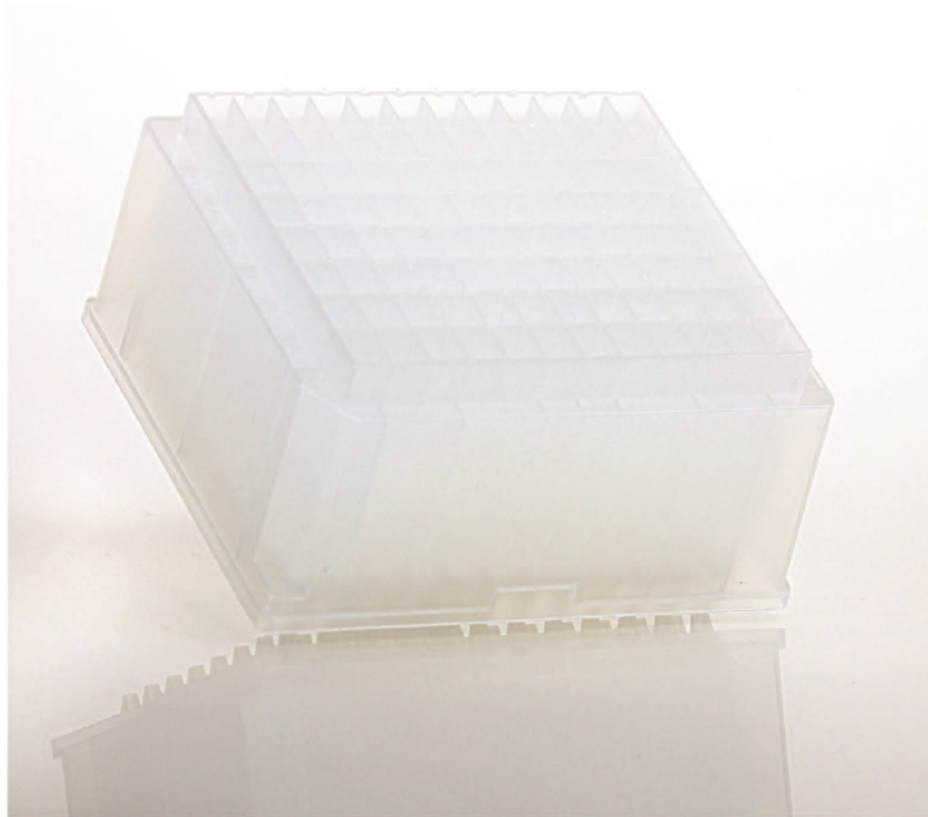


Aquamatrix™

96-well plates & cartridges



For Supported Liq-Liq Extraction

Orochem Aquamatrix plates are 96 well plates in 1mL or 2mL formats packed with flux calcined diatomaceous earth for high capacity retention of analytes.

- Rapid
- Ease of Automation
- High Throughput
- No Solvent Leakage
- No Cross Contamination
- Plate & Cartridge formats

Features and Applications:

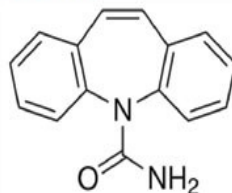
- Packed with chemically inert material, stable in the pH range 1-13
- Plates compatible with robotic liquid handlers for automated extraction
- Allows high throughput alternative to traditional liquid-liquid extraction techniques
- Eliminates steps like mixing, centrifugation and organic phase separation
- Provides support, greater surface area and accelerated solvent extraction
- No pre-treatment of the bed is necessary

Ordering Info

Catalog #	Description
OC21DA260 -HPGB	Unbuffered Flux Calcined Diatomaceous Earth 260 mg 2mL plate
OMNDA150 - HPGB	Unbuffered Flux Calcined Diatomaceous Earth 150 mg 1mL plate
OC21DA400 -HPGB	Unbuffered Flux Calcined Diatomaceous Earth 400 mg 2mL plate
SYDA6ML	Unbuffered Diatomaceous Earth, 6ml
SYDA3ML	Unbuffered Diatomaceous Earth, 3ml

SUPPORTED LIQUID-LIQUID EXTRACTION Plate

Compound: Carbamazepine



LIQUID-LIQUID EXTRACTION METHOD:

(Supported liquid-liquid extraction plate)
 (Catalog #OC21DA260-HPGB)

HPLC METHOD:

Column: Orochem Reliasil C8
 HPLC column 4.6x50 mm, 5 μ m.
Part number: R3BI-102
Mobile phase: Water/acetonitrile 65:35
Flow rate: 0.5 mL/min
Injection volume: 20 μ L
Retention time: 3.87 min

Load:

100 μ L spiked human plasma (250ng/mL)
 with 100 μ L water and 20 μ L ammonium hydroxide.
 Let stand for 5 minutes, then apply a short pulse of positive pressure.

Elute:

1.5 mL of ethyl acetate twice.
 Let solvent stand for 5 minutes, then apply a gentle stream of
 positive pressure till all solvent passes through.

Evaporate and Reconstitute:
 200 μ L of 35% acetonitrile

MS/MS CONDITIONS:

Mass spectrometer: API3000
Ion source: Turbo IonSpray
Polarity: Positive
Scan mode: MRM: primary,
 Q1: 237.1, Q3: 194;
 secondary,
 Q1: 237.1, Q3: 220.0
IS: 4000
Temp. 550
DP: 20
CAD: 12
CE: 25
CXP: 15

RESULTS

Recovery(CV%): 83% (2.8%)

