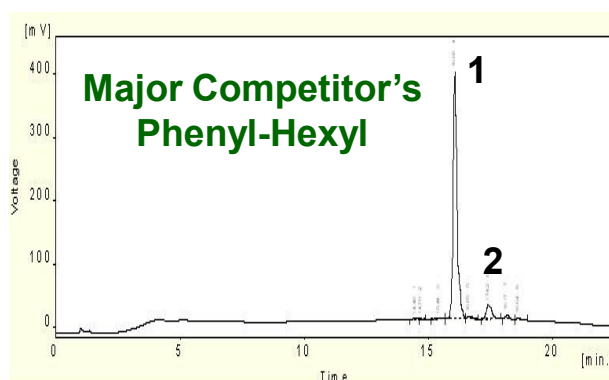
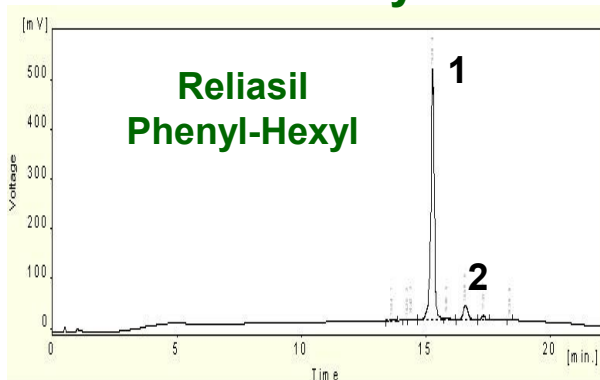


## Reliasil™ Phenyl-Hexyl Phase

The Reliasil™ Phenyl-Hexyl stationary phase is made by bonding phenyl groups to the silica surface via a 6-carbon tether. The result is a stationary phase balanced between aromatic and hydrophobic selectivity. This phase is particularly good for separating aromatic hydrocarbons.

### Analysis of Purified Vitamin E



1.  $\alpha$ -Tocotrienol
2.  $\gamma$ -Tocopherol

Column	Phenyl-Hexyl, 5 $\mu$ m, 4.6 x 150 mm
Catalog No.	R5FI-941
Flow Rate	2.00 mL/min
Column Temperature	45°C
Detection	UV 290 nm
Elution Gradient	A = Water, B = Acetonitrile
Gradient Profile (% A/%B)	Time 0: 95/5 Time 5: 40/60 Time 20: 0/100 Time 25: 0/100 Time 25.1: 95/5 Time 30: 95/5