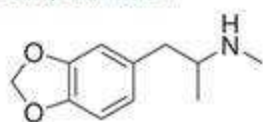
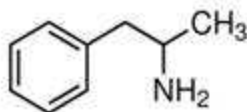


Sagacity HL SPE Cartridges

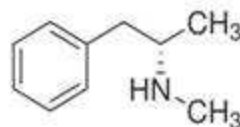
Compounds:



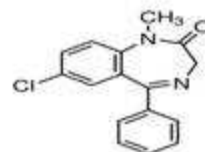
MDA



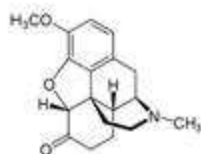
Amphetamine



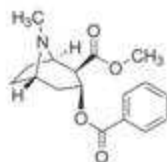
Methamphetamine



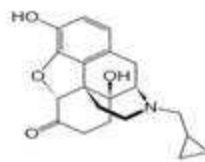
Diazepam



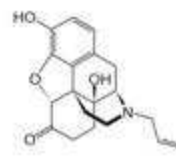
Hydrocodone



Cocaine



Naltrexone



Naloxone

SPE EXTRACTION METHOD:

(Sagacity HL cartridge, 25 mg/ 1 cc, Cat# SYSG2025-01)

Pretreatment:

Incubate 0.1 mL urine with 0.1 mL of glucuronidase in 100 mM NH₄AC (pH 5)



Load:

Pretreated urine sample to Sagacity HL cartridge



Wash:

1 mL water, followed by 1 mL of 5% methanol



Elute:

1 mL of acetonitrile with 0.1% formic acid



Evaporate and Reconstitute:

100 µL of 30% acetonitrile

HPLC METHOD:

Column: Orochem Reliasil C18 HPLC column 4.6x50 mm, 3 µm

Part number: R3BI-101

Mobile phase:

A: 2 mM NH₄AC/ACN/formic acid (65:35:0.1)

B: 0.1% formic acid in ACN

Hold 100% A for 1 min, then gradient from 0%B to 100% B in 6 min; run time, 7.5 min

Flow rate: 0.7 mL/min

Injection volume: 20 µL

MS/MS CONDITIONS:

Mass spectrometer: API3000

Ion source: APCI

Polarity: Positive

Scan mode: MRM:

MDA: Q1: 180.3, Q3: 163.3

Methamphetamine: Q1: 150.2, Q3: 91.1

Diazepam: Q1: 285.2, Q3: 154.0

Hydrocodone: Q1: 300.4, Q3: 199.2

Cocaine: Q1: 304.2, Q3: 182.0

Amphetamine: Q1: 136.3, Q3: 91.1

Naltrexone: Q1: 342.1, Q3: 310.1

Naloxone: Q1: 328.1, Q3: 310.1

APCI current: 4000

Temp. 500

DP: 25

CAD: 12

CE: various by analytes