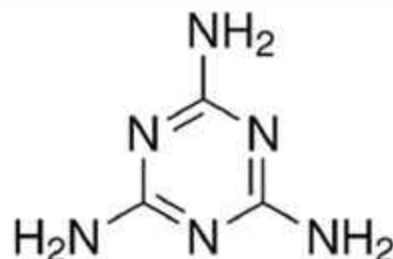


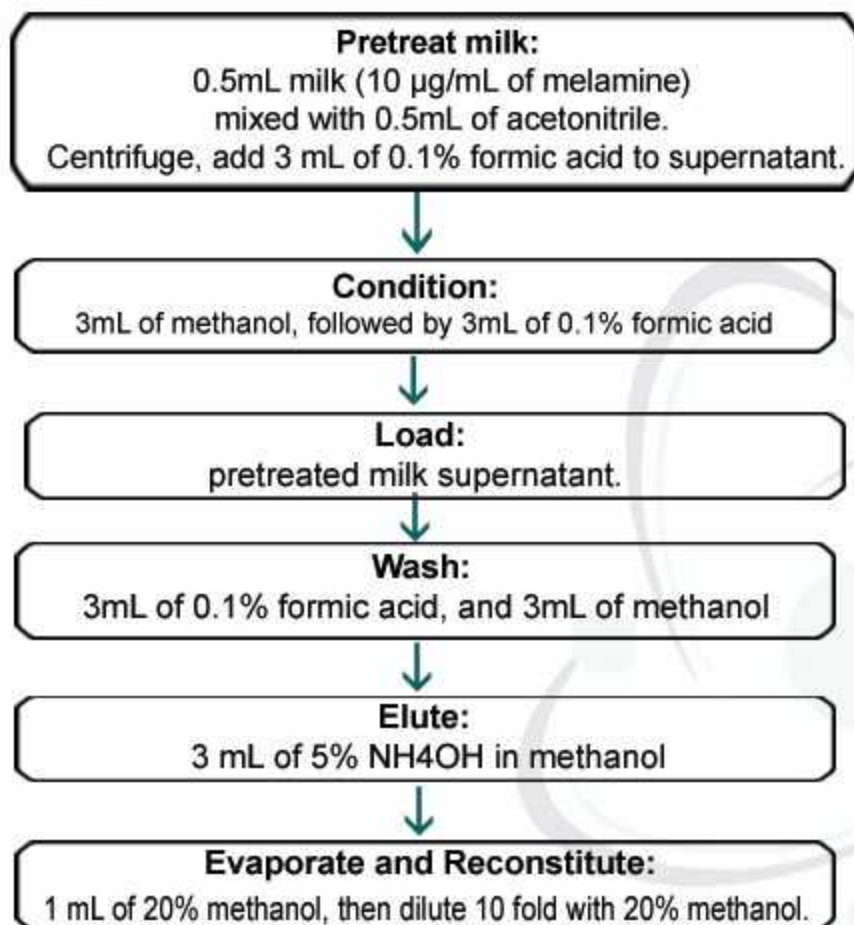
Agility SCX SPE Cartridges

Compound: Melamine



SPE EXTRACTION METHOD:

(SCX extraction cartridge)
 (catalog # SYSCX 200, 200 mg/3mL)



HPLC METHOD:

Column: Orochem Reliasil C8 HPLC column
4.6x50 mm, 5µm.
Part number: R3BI-102
Mobile phase: 50% methanol, 50%water,
0.05% formic acid
Flow rate: 0.5 mL/min
Injection volume: 20µL
Retention time: 3.99 min

MS/MS CONDITIONS:

Mass spectrometer: API3000
Ion source: Turbo Ionspary
Polarity: Positive
Scan mode: MRM: primary,
Q1: 126.9, Q3: 85;
secondary,
Q1: 126.9, Q3: 110.1
IS: 4000
Temp. 550
DP: 25
CAD: 12
CE: 30
CXP: 10

RECOVERY(CV%)
 85% (2.6%); n=6

