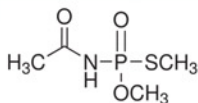
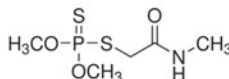


## CELERITY Deluxe SPE Cartridges

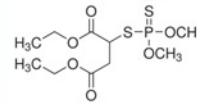
### Compounds:



Acephate



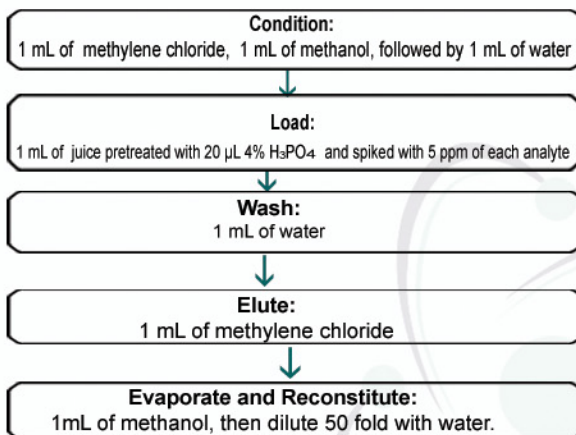
Dimethoate



Malathion

### SPE EXTRACTION METHOD:

(Celerity Deluxe cartridge, 30 mg/ 1cc, Catalog #SYCY6030-01)

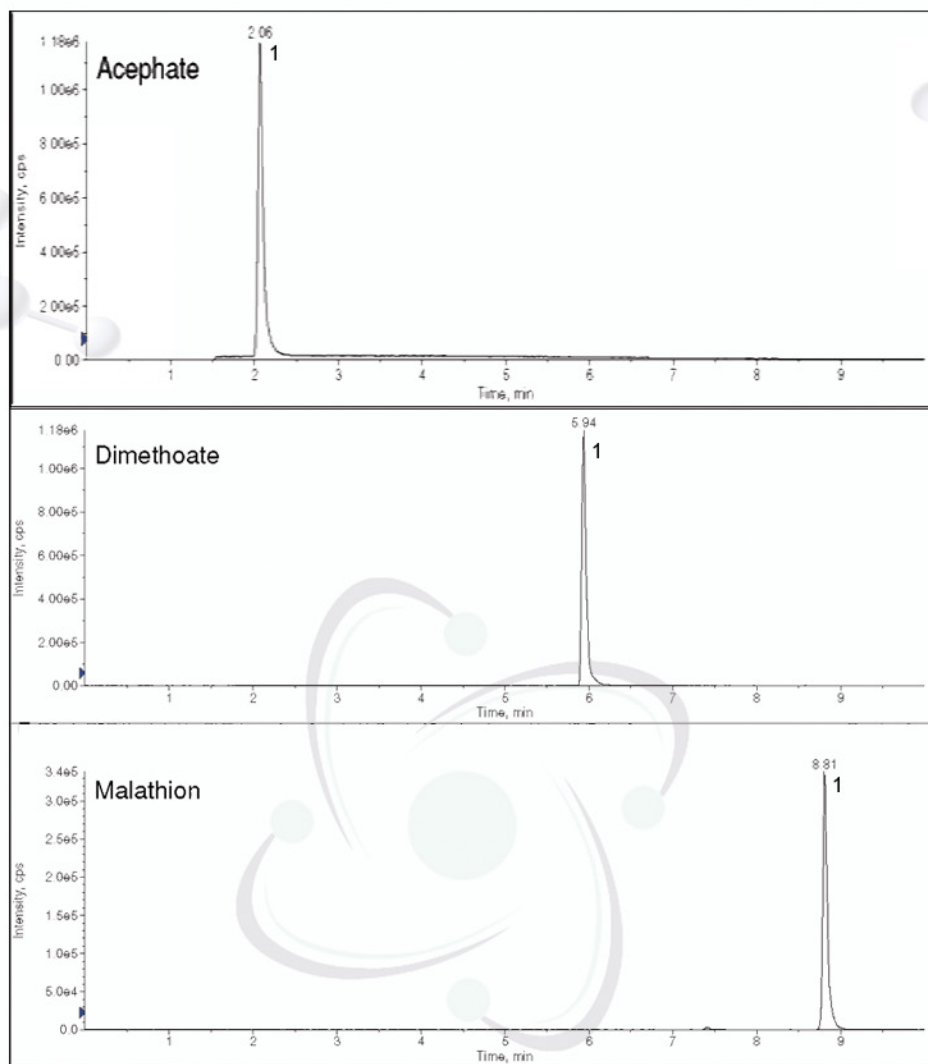


### HPLC METHOD:

**Column:** Orochem Reliasil C18 HPLC Column 4.6x50 mm, 3 µm.  
**Part number:** R3BI-101  
**Mobile phase:** Acetonitrile in water, gradient from 10% at 2 min to 80% at 8 min; run time, 10 min.  
**Flow rate:** 0.5 mL/min  
**Injection volume:** 20µL.  
**Retention times:** Acephate - 2.06 min  
 Dimethoate - 5.94 min  
 Malathion - 8.81 min

### MS/MS CONDITIONS

Mass spectrometer: API3000  
 Ion source: Turbo Ionspray  
 Polarity: Positive  
 Scan mode: MRM:  
 Acephate – primary, Q1: 184.0, Q3: 142.8;  
 secondary, Q1: 184.0, Q3: 124.8  
 Dimethoate – primary, Q1: 230.0, Q3: 199.0;  
 secondary, Q1: 230.0, Q3: 171.0  
 Malathion – primary, Q1: 331.2, Q3: 285.0;  
 secondary, Q1: 331.2, Q3: 127.0  
 IS: 5000  
 Temp. 500  
 DP: 20  
 CAD: 12  
 CE: 12  
 CXP: 15



RESULTS		
	Recovery(%)	CV(%)
Acephate	86.4	0.6
Dimethoate	102.4	1.7
Malathion	80.3	5.0