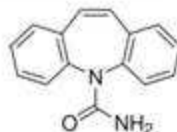


PROTEIN CRASH PLATE

Compounds: Carbamazepine



PROTEIN CRASH METHOD:

(Protein Crash and Precipitate Filter Plate, 2 mL/well, 0.2µm cutoff, Catalog#OC21PPT20-1)

Load:

300 µL of acetonitrile first, followed by 100 µL of spiked human plasma (250 ng/mL). Vortex for 2 minutes



Elute:

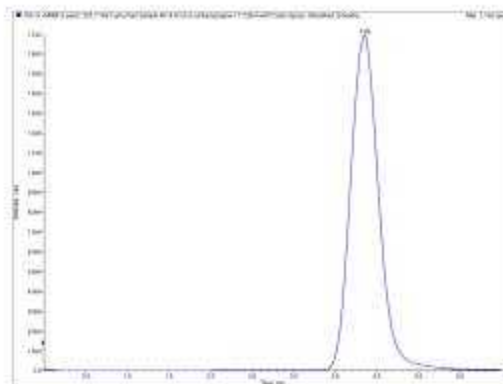
Apply a gentle stream of positive pressure until all solvent passes through. Inject directly into HPLC

HPLC METHOD:

Column: Orochem Reliasil C8 HPLC column 4.6x50 mm, 3 µm
Part number: R3BI-102
Mobile phase: Water/Acetonitrile 65:35
Flow rate: 0.5 mL/min
Injection volume: 20 µL
Retention Time: 3.86 min

MS/MS CONDITIONS:

Mass spectrometer: API3000
Ion source: Turbo IonSpray
Polarity: Positive
Scan mode: MRM
 Primary, Q1: 237.1, Q3: 194;
 Secondary, Q1: 237.1, Q3: 220.0
IS: 4000
Temp. 500
DP: 20
CAD: 12
CE: 25
CXP: 10



RESULTS:

Recovery (CV%): 84.3% (5.7%)