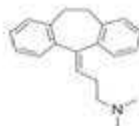


## AGILITY DVB SCX SPE CARTRIDGE

Compound: Amitriptyline



### SPE EXTRACTION METHOD:

(Agility™ DVB SCX cartridge, 30 mg/1 cc)  
(Catalog # OC21AG2030-96)

#### Condition:

1 mL of methanol, followed by 1 mL of 1% formic acid



#### Load:

100 µL of spiked human plasma (500 ng/mL analyte)  
with 100 µL of 0.5% formic acid



#### Wash:

1 mL of 1% formic acid, followed by 1 mL of 1% formic  
acid in 50% methanol



#### Elute:

1 mL of 5% NH<sub>4</sub>OH in methanol



#### Evaporate and Reconstitute:

200 µL of mobile phase

### HPLC METHOD:

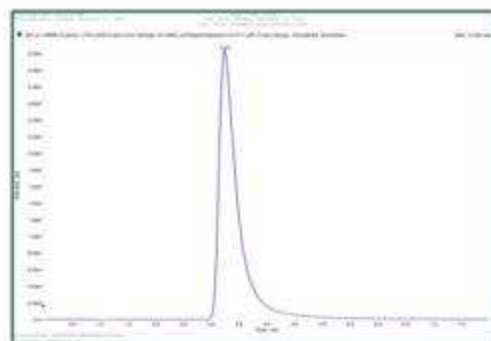
**Column:** Orochem Reliasil C18  
HPLC column 4.6x50 mm, 3 µm.

**Part number:** R3BI-101

**Mobile phase:** 40 mM  
NH<sub>4</sub>AC/methanol/acetonitrile  
16:64:20

**Flow rate:** 0.5 mL/min

**Injection volume:** 20 µL



### MS/MS CONDITIONS:

**Mass spectrometer:** API3000

**Ion source:** Turbo Ion spray

**Polarity:** Positive

**Scan mode:** MRM: primary, Q1:  
278.2, Q3: 233.0; secondary, Q1: 278.2,  
Q3: 91.0

**IS:** 5000

**Temp.:** 500

**DP:** 25

**CAD:** 12

**CE:** 25

**CXP:** 15

### RESULTS

**Recovery (CV%):** 102.9% (5.3%)