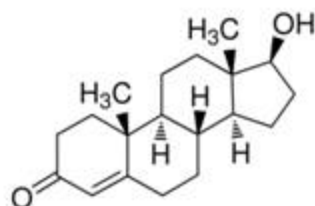
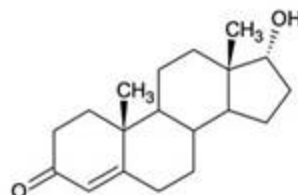


Matrix Polychrome HPLC Column

Chemicals:



Testosterone



Epitestosterone

HPLC Condition:

Column: Matrix Polychrome HPLC column 4.6x50 mm, 5 μ m.

Part number: R5BI-968

Mobile phase: 0.1% formic acid in Acetonitrile :0.1% formic acid 40:60

Flow rate: 0.8 mL/min

Injection volume: 5 μ L

MS/MS CONDITIONS:

Mass spectrometer: API3000

Ion source: Turbo Spray (ESI)

Polarity: Positive

Scan mode: MRM: Testosterone:

Q1: 289.2; Q3: 109.1, primary, Q1:

289.2; Q3: 97, secondary.

Epitestosterone: Q1 : 289.2; Q3:

109.1, primary, Q1:289.2; Q3:97,

secondary.

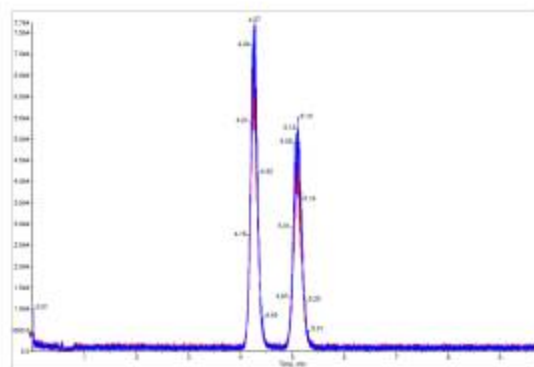
ISV: 4000

Temp: 500

DP: 30

CAD: 12

CE: 30



mass chromatogram of test mixture extracted from human plasma,

Testosterone	4.27 min
Epitestosterone	5.10 min