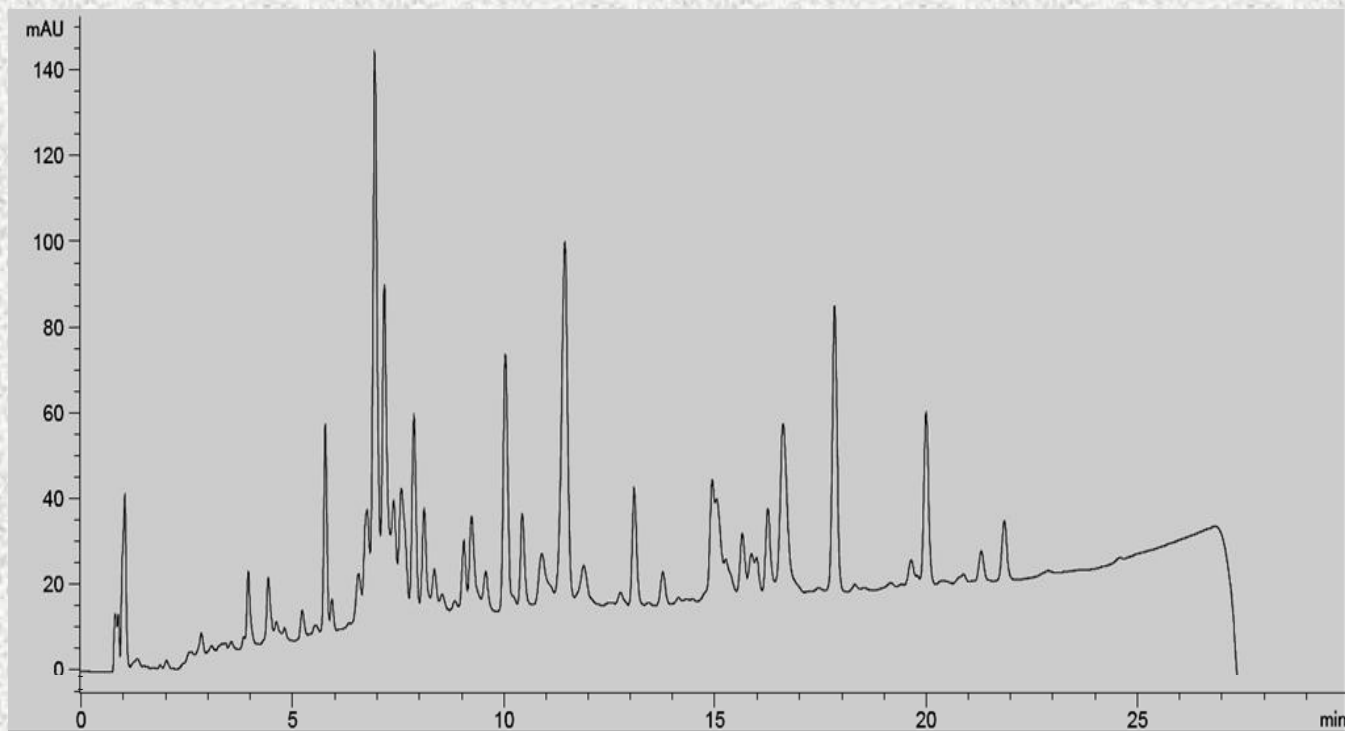


BSA Tryptic Digest analysis by Reliasil C18 300, 5 µm column

Use: Peptide analysis



Sample: 500 pmol of trypsin-digested BSA MS Standard (CAM modified) reconstituted in 100 µL of 0.1% TFA

Load: ~16 µg of protein

HPLC	Agilent 1100
Column	Reliasil C18 300, 5 µm
Column Size	3 x 100 mm
Temperature	25 °C
Detection	UV at 220 nm
Injection	50 µL

Mobile Phase	A: 0.1 % TFA in water B: 0.1% TFA in acetonitrile	
Flow Rate	0.7 mL/min	
Gradient	Time	%B
	0	5
	1	9
	4	15
	20	31
	22	36
	25	50
	30	5