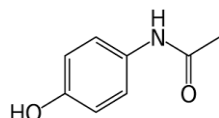
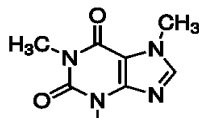


## Panthera Deluxe SPE Cartridges

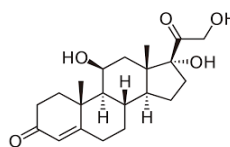
Compounds :



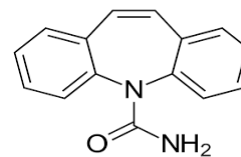
Acetaminophen



Caffeine



Hydrocortisone



Carbamazepine

### SPE EXTRACTION METHOD:

(Panthera Deluxe cartridge, 30 mg/ 1 cc,  
Cat# SYPA6030-01)

#### Condition:

1 mL of methanol, followed by 1 mL of water



#### Load:

100 µL of sample



#### Wash:

1 mL of water followed by 1 mL of 5% methanol in water



#### Elute:

1 mL of methanol



#### Evaporate and Reconstitute:

100 µL of 10% acetonitrile in water

### HPLC-UV METHOD:

**Column:** Orosil C18-HC HPLC column 4.6x 150 mm, 3 µm.

Column Temp: 25°C

**Mobile phase A:** Water

**Mobile phase B:** ACN

#### Gradient table

Time (min)	%B
0	10
2	10
8	70
11	70

**Flow rate:** 1 mL/min

**Injection volume:** 10 µL

**UV wavelength:** 254 nm

### RECOVERY AND PRECISION TEST RESULTS:

	Recovery%	CV(%)
Acetaminophen	103.7	0.6
Caffeine	100.3	0.5
Hydrocortisone	102.5	0.8
Carbamazepine	101.4	0.8

