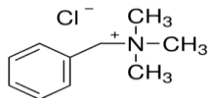
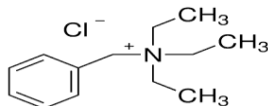


Agility Deluxe WCX SPE Cartridges

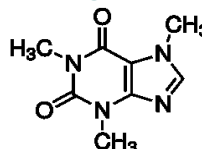
Compounds :



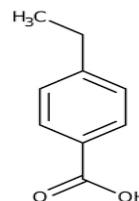
Benzyltrimethylammonium
Chloride



Benzyltriethylammonium
Chloride



Caffeine



4-Ethylbenzoic Acid

SPE EXTRACTION METHOD:

(Agility Deluxe WCX cartridge, 30 mg/ 1 cc, Cat#SYAGD8030-01)

Condition:

1 mL of methanol, followed by 1 mL of water



Load:

1 mL of sample



Wash:

1 mL 25mM sodium citrate buffer pH=5



Elute:

Elute neutral and acidic compounds with 1 mL of methanol
Elute quaternary ammonium salts with 2% (v/v) formic acid in 20/80 (v/v) methanol/acetonitrile



Evaporate and Reconstitute:

200 µL of 10% acetonitrile in water

HPLC-UV METHOD:

Column: Orosil C18-HC HPLC column 4.6x 150 mm, 3 µm.

Column Temp: 40°C

Mobile phase A: 20 mM Potassium Phosphate Monobasic in 10% MeOH, pH 3.0

Mobile phase B: MeOH

Gradient table

Time (min)	%B
0	10
10	80
18	80

Flow rate: 0.8 mL/min

Injection volume: 10 µL

UV wavelength: 220 nm

RECOVERY AND PRECISION TEST RESULTS:

	Recovery%	CV(%)
Benzyltrimethyl-ammonium Chloride	85.5	4.4
Benzyltriethyl-ammonium Chloride	94.0	1.4
Caffeine	98.7	1.8
4-Ethylbenzoic Acid	98.8	2.5

