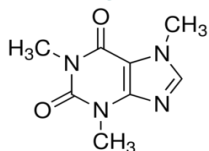
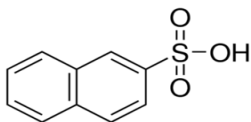


Agility Deluxe WAX SPE Plate

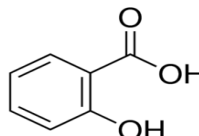
Compounds :



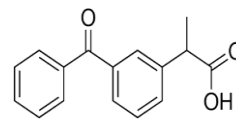
Caffeine



2-Naphthalenesulfonic acid



Salicylic acid



Ketoprofen

SPE EXTRACTION METHOD:

(Agility Deluxe WAX PLATE, 30 mg/
WELL, Cat# OC21AGD7030)

Condition:

1 mL of methanol, followed by 1 mL of water



Load:

1 mL of sample



Wash:

1 mL 25mM sodium acetate buffer pH=4



Elute:

Elute basic compound with 1 mL of methanol
Elute acidic compounds with 5% (v/v) ammonium
hydroxide in 20/80 (v/v) methanol/acetonitrile



Evaporate and Reconstitute:

200 µL of 10% acetonitrile in water

HPLC-UV METHOD:

Column: Orosil C18-SD HPLC
column 4.6x 150 mm, 3 µm.

Part number: 03FI-022

Column Temp: 40°C

Mobile phase A: 20 mM

Potassium Phosphate Monobasic,
pH 3.0

Mobile phase B: MeOH

Gradient table

Time (min)	%B
0	30
9	30
15	75
25	75

Flow rate: 0.8 mL/min

Injection volume: 10 µL

UV wavelength: 230 nm

RECOVERY AND PRECISION TEST RESULTS:

	Recovery%	CV(%)
Caffeine	83.9	11.0
2-Naphthalenesulfonic acid	105.5	1.7
Salicylic acid	100.7	9.1
Ketoprofen	84.0	10.5

