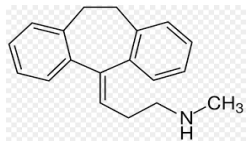
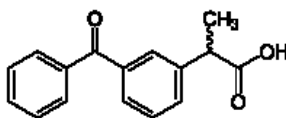


Agility Deluxe SAX SPE Cartridges

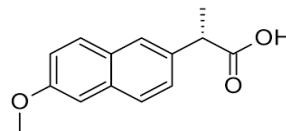
Compounds :



Nortriptyline



Ketoprofen



Naproxen

SPE EXTRACTION METHOD:

(Agility Deluxe SAX cartridge, 30 mg/ 1 cc,
Cat# SYAGD5030-01)

Condition:

1 mL of methanol, followed by 1 mL of water



Load:

1 mL of sample (diluted in PBS solution)



Wash:

1 mL 50 mM NaAC, pH 7.0 containing 5% methanol



Basic and Neutral Elute:

1 mL of methanol



Acid Elute:

1 mL of 5% (v/v) formic acid in methanol



Evaporate and Reconstitute:

1.0 mL of 10% acetonitrile in PBS solution

HPLC-UV METHOD:

Column: Orosil C18-HC HPLC

Column Temp: 40°C

Mobile phase A: 20 mM

Potassium Phosphate Monobasic
in 10% MeOH, pH 3.0

Mobile phase B: MeOH

Isocratic: 45%A:55%B

Flow rate: 0.8 mL/min

Injection volume: 10 µL

UV wavelength: 220 nm

RECOVERY AND PRECISION TEST RESULTS:

	Recovery%	CV(%)
Nortriptyline	92.2	0.8
Ketoprofen	100.9	0.4
Naproxen	100.2	0.2

