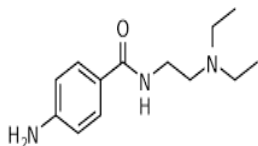
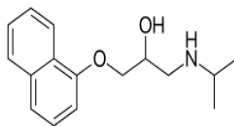


Agility Deluxe SCX SPE Cartridges

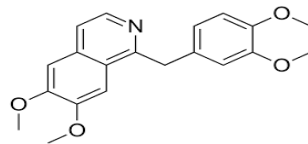
Compounds :



Procaineamide



Propranolol



Papaverine

SPE EXTRACTION METHOD:

(Agility Deluxe SCX cartridge, 30 mg/ 1 cc,
Cat# SYAGD2030-01)

Condition:

1 mL of methanol, followed by 1 mL of water



Load:

1 mL of sample



Wash:

1 mL 0.1N HCl, followed by 1 mL of methanol



Elute:

1 mL of 5% (v/v) ammonium hydroxide in methanol



Evaporate and Reconstitute:

200 μ L of 10% acetonitrile in water

HPLC-UV METHOD:

Column: Orosil C18-HC HPLC
column 4.6x 150 mm, 3 μ m.

Column Temp: 40°C

Mobile phase A: 20 mM
Potassium Phosphate Monobasic
in 10% MeOH, pH 3.0

Mobile phase B: MeOH

Gradient table

Time (min)	%B
0	0
5	45
15	45

Flow rate: 0.8 mL/min

Injection volume: 20 μ L

UV wavelength: 230 nm

RECOVERY AND PRECISION TEST RESULTS:

	Recovery%	CV(%)
Procaineamide	91.9	0.8
Propranolol	89.1	0.5
Papaverine	70.9	6.5

