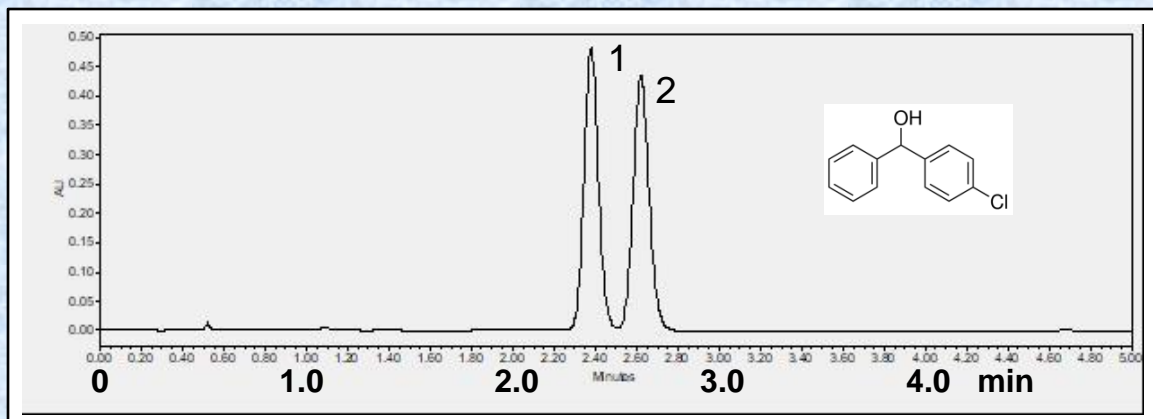


Separation of 4-Chlorobenzhydrol on Epitomize CSP-1A by UHPLC



Sample	4-Chlorobenzhydrol		[D18483]
System	Waters Acquity, H-Class		
Column	Epitomize CSP-1A, 3 micron, 3.0 x 50 mm		
Mobile Phase	95/5 Heptane/2-propanol		
Flow Rate	0.50 mL/min	Rt1 & Rt2 (min)	2.38 & 2.62
Temperature	25 °C	k1 & k2	4.02 & 4.53
Detection	UV at 230 nm	Separation Value	1.13
Injection	0.20 µL (1 mg/mL)	Resolution	1.80