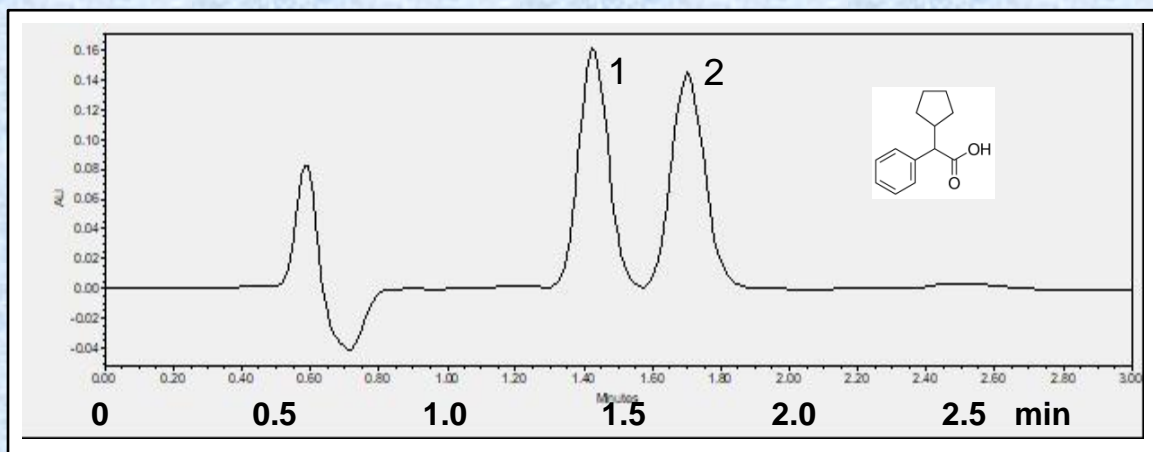


## Separation of Cyclopentylphenylacetic Acid on Epitomize CSP-1Z by UHPLC



<b>Sample</b>	Cyclopentylphenylacetic Acid [D20660]		
<b>System</b>	Waters Acquity, H-Class		
<b>Column</b>	Epitomize CSP-1Z, 3 micron, 3.0 x 50 mm		
<b>Mobile Phase</b>	95/5/0.1 Heptane/2-propanol/TFA		
<b>Flow Rate</b>	0.50 mL/min	<b>Rt1 &amp; Rt2 (min)</b>	1.43 & 1.70
<b>Temperature</b>	25 °C	<b>k1 &amp; k2</b>	1.76 & 2.30
<b>Detection</b>	UV at 210 nm	<b>Separation Value</b>	1.30
<b>Injection</b>	0.50 µL (1 mg/mL)	<b>Resolution</b>	1.62