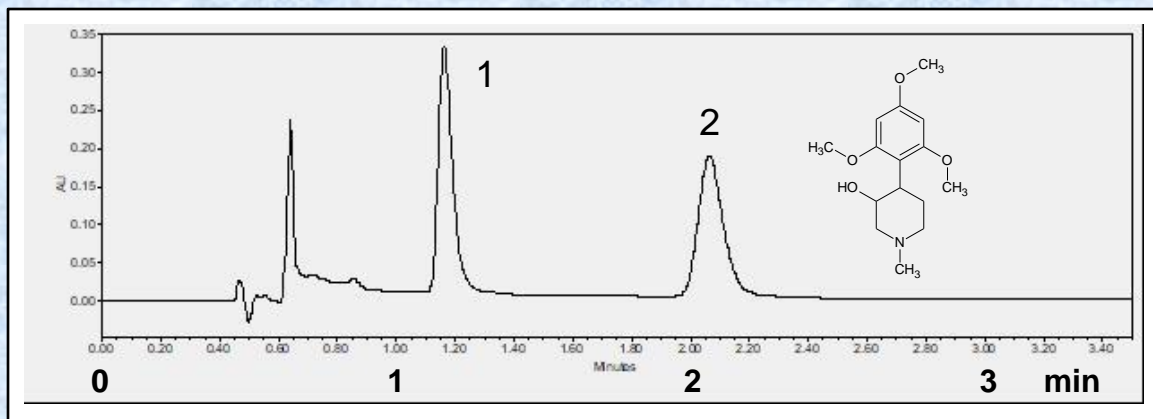


## Separation of Flocinopiperidol on Epitomize CSP-1A by UHPLC



|                     |   |                            |             |
|---------------------|---|----------------------------|-------------|
| <b>Sample</b>       | Flocinopiperidol [D22036]                 |                            |             |
| <b>System</b>       | Waters Acquity, H-Class                   |                            |             |
| <b>Column</b>       | Epitomize CSP-1A, 3 micron, 3.0 x 50 mm   |                            |             |
| <b>Mobile Phase</b> | 80/20/0.1 Heptane/2-propanol/diethylamine |                            |             |
| <b>Flow Rate</b>    | 0.50 mL/min                               | <b>Rt1 &amp; Rt2 (min)</b> | 1.16 & 2.06 |
| <b>Temperature</b>  | 25 °C                                     | <b>k1 &amp; k2</b>         | 1.45 & 3.35 |
| <b>Detection</b>    | UV at 230 nm                              | <b>Separation Value</b>    | 2.31        |
| <b>Injection</b>    | 0.50 µL (1 mg/mL)                         | <b>Resolution</b>          | 7.61        |