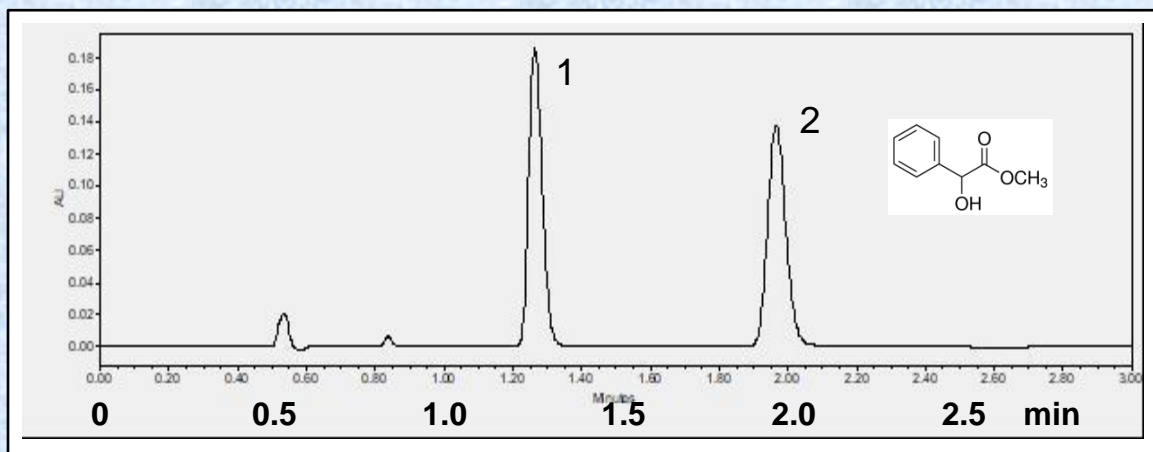


Separation of Methyl DL-mandelate on Epitomize CSP-1C by UHPLC



Sample	Methyl DL-mandelate [D18571]		
System	Waters Acquity, H-Class		
Column	Epitomize CSP-1C, 3 micron, 3.0 x 50 mm		
Mobile Phase	90/10 Heptane/2-propanol		
Flow Rate	0.50 mL/min	Rt1 & Rt2 (min)	1.26 & 1.97
Temperature	25 °C	k1 & k2	1.48 & 2.85
Detection	UV at 230 nm	Separation Value	1.93
Injection	1.00 µL (1 mg/mL)	Resolution	8.30