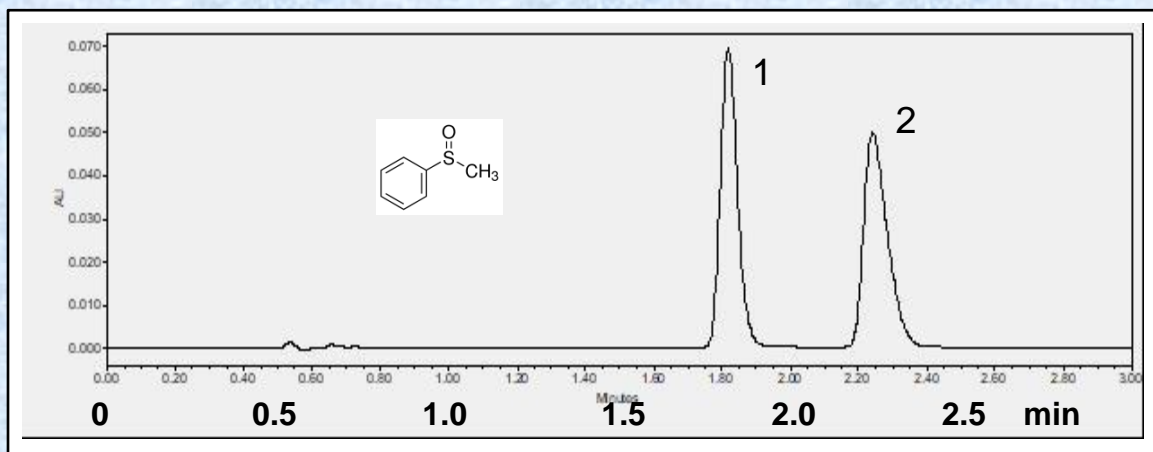


## Separation of Methyl phenyl sulfoxide on Epitomize CSP-1C by UHPLC



<b>Sample</b>	Methyl phenyl sulfoxide [D18575]		
<b>System</b>	Waters Acquity, H-Class		
<b>Column</b>	Epitomize CSP-1C, 3 micron, 3.0 x 50 mm		
<b>Mobile Phase</b>	90/10 Heptane/2-propanol		
<b>Flow Rate</b>	0.50 mL/min	<b>Rt1 &amp; Rt2 (min)</b>	1.82 & 2.24
<b>Temperature</b>	25 °C	<b>k1 &amp; k2</b>	2.57 & 3.39
<b>Detection</b>	UV at 230 nm	<b>Separation Value</b>	1.32
<b>Injection</b>	0.20 µL (1 mg/mL)	<b>Resolution</b>	3.89