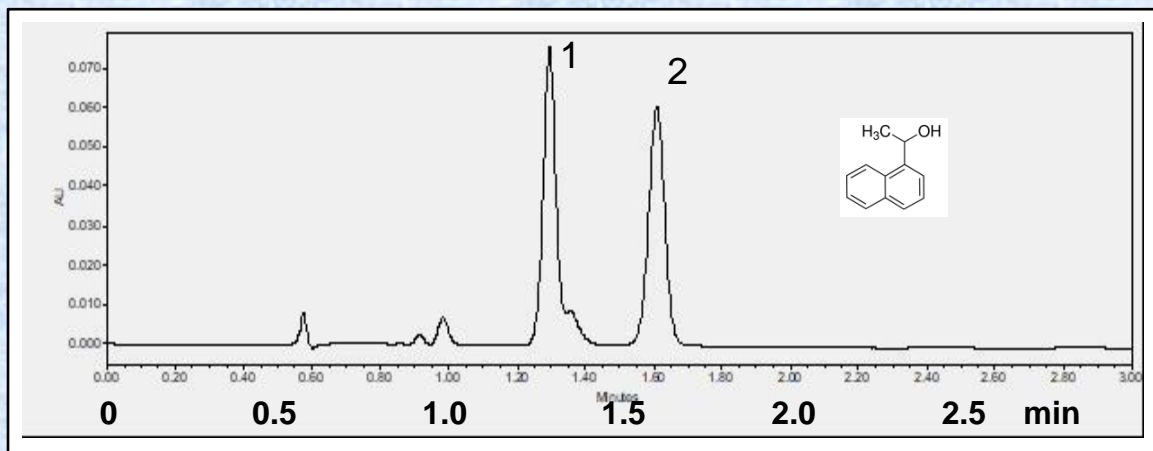


Separation of 1-(1-Naphthyl)ethanol on Epitomize CSP-2C by UHPLC



Sample	1-(1-Naphthyl)ethanol [D19302]		
System	Waters Acquity, H-Class		
Column	Epitomize CSP-2C, 3 micron, 3.0 x 50 mm		
Mobile Phase	90/10 Heptane/2-propanol		
Flow Rate	0.50 mL/min	Rt1 & Rt2 (min)	1.30 & 1.61
Temperature	25 °C	k1 & k2	1.38 & 1.96
Detection	UV at 254 nm	Separation Value	1.42
Injection	0.20 µL (1 mg/mL)	Resolution	4.09