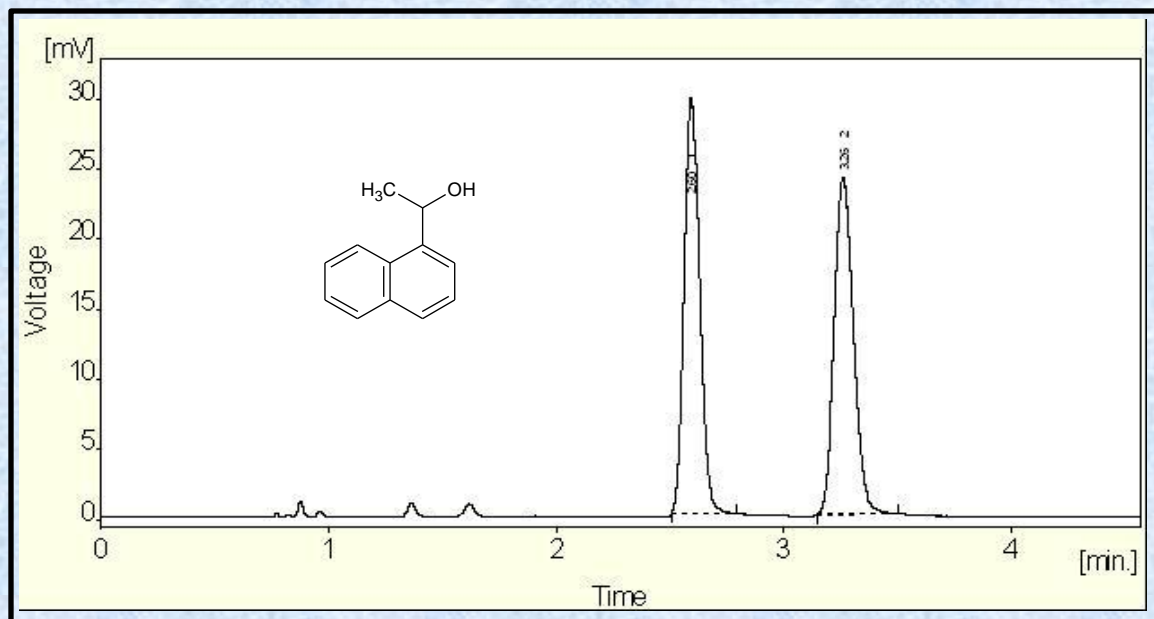


## 1-(1-Naphthyl)ethanol on Epitomize CSP-1J, 1.7 $\mu\text{m}$ , UHPLC



<b>Column</b>	CSP-1J, 1.7 micron
<b>Column Size</b>	3.0 x 50 mm
<b>Mobile Phase</b>	90/10 heptane/2-propanol
<b>Flow Rate (mL/min)</b>	0.40
<b>Temperature (°C)</b>	27
<b>Detection</b>	UV at 254 nm
<b>Rt1 &amp; Rt2 (min)</b>	2.60 & 3.26
<b>k1 &amp; k2</b>	3.21 & 4.29
<b>Separation Value</b>	1.34