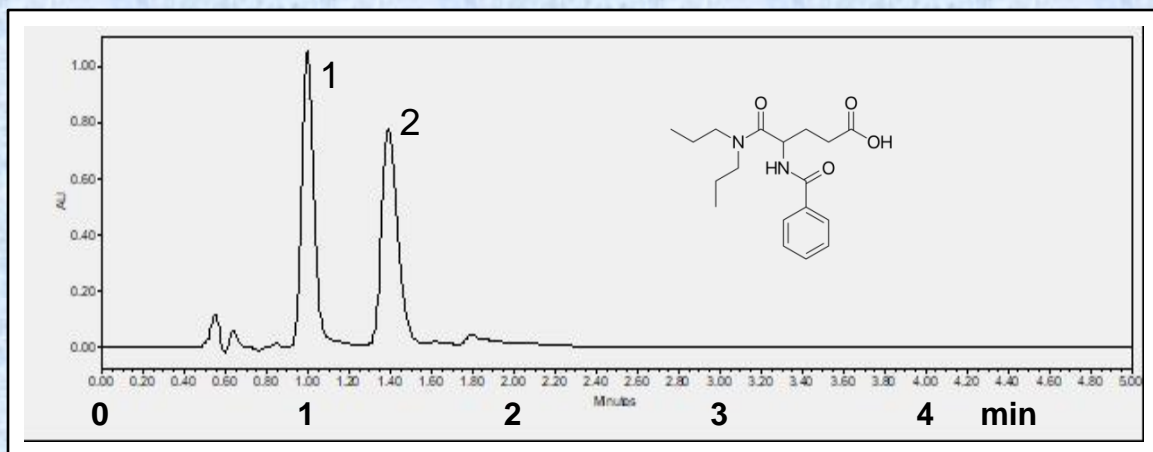


Separation of Proglumide on Epitomize CSP-1C by UHPLC



Sample	Proglumide [D20442]		
System	Waters Acquity, H-Class		
Column	Epitomize CSP-1C, 3 micron, 3.0 x 50 mm		
Mobile Phase	90/10/0.1 Heptane/2-propanol/TFA		
Flow Rate	0.50 mL/min	Rt1 & Rt2 (min)	1.00 & 1.39
Temperature	25 °C	k1 & k2	1.10 & 1.94
Detection	UV at 210 nm	Separation Value	1.75
Injection	0.50 µL (1 mg/mL)	Resolution	3.30