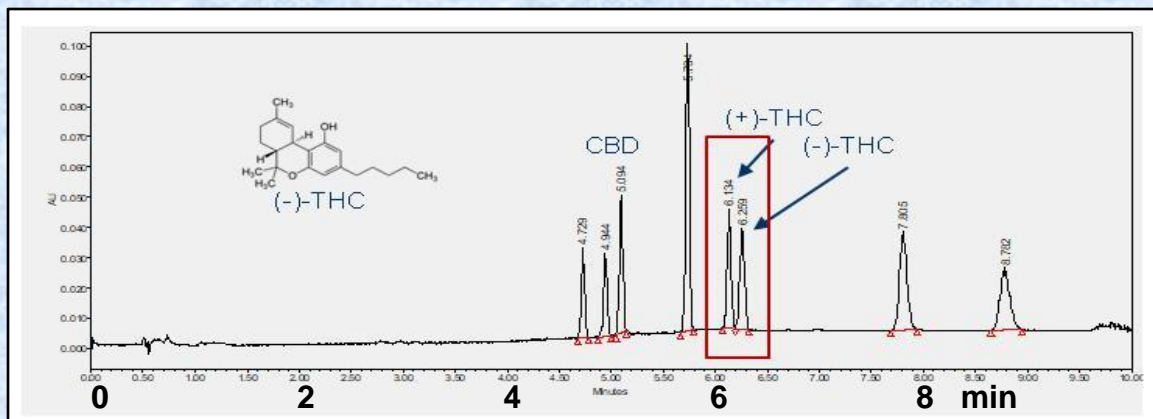


Separation of Tetrahydrocannabinol on Epitomize CSP-1A by SFC-UHPLC



Sample	Tetrahydrocannabinol [E2371]		
System	Waters Acquity, UPC ²		
Column	Epitomize CSP-1A, 3 micron, 2.1 x 150 mm		
Mobile Phase	CO ₂ /ethanol gradient Time 0: 98/2, time 9.00: 80/20.		
Flow Rate	0.80 mL/min	CBD, R₁	5.09 min
Temperature	50 °C	(+)-trans-Δ^9-THC, R₂	6.13 min
ABPR	2000 psi	(-)-trans-Δ^9-THC, R₃	6.26 min
Detection	UV at 220 nm	k1, k2, k3	11.39, 13.92, 14.23
Injection	2.00 μ L (1 mg/mL)	Separation Value	1.02 for THC
		Resolution	1.58 for THC