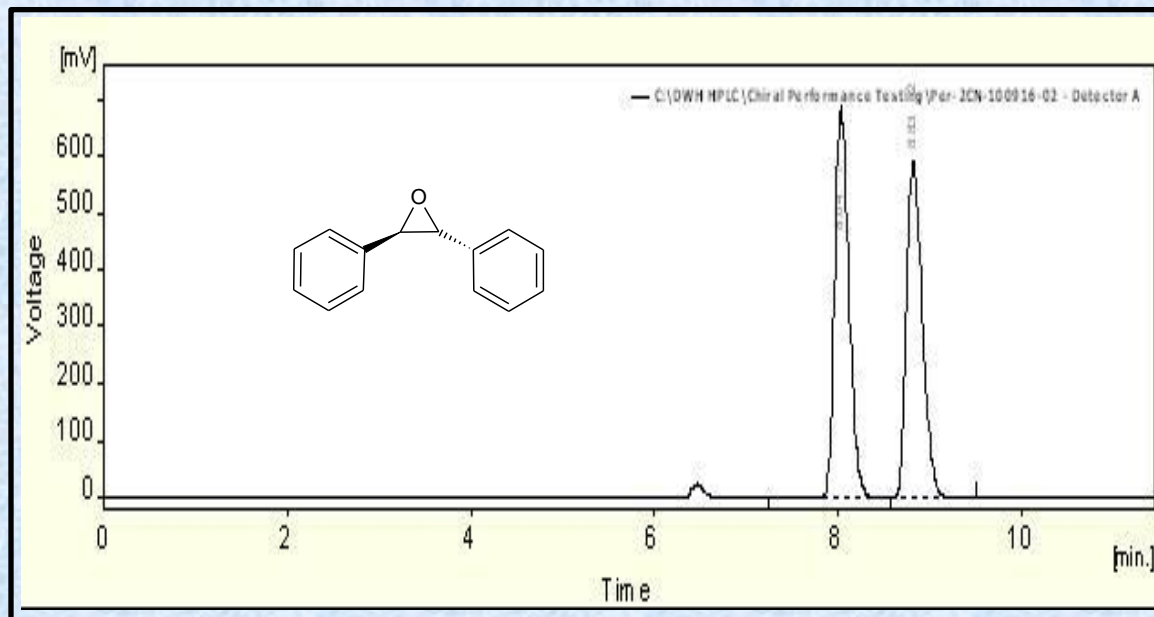


trans-Stilbene Oxide on Epitomize CSP-2C, 5 μ m



Column	CSP-2C, 5 micron
Column Size	4.6 x 250 mm
Mobile Phase	90/10 heptane/2-propanol
Flow Rate (mL/min)	1.0
Temperature (°C)	28
Detection	UV at 254 nm
Rt1 & Rt2 (min)	8.04 & 8.83
k1 & k2	0.25 & 0.37
Separation Value	1.50