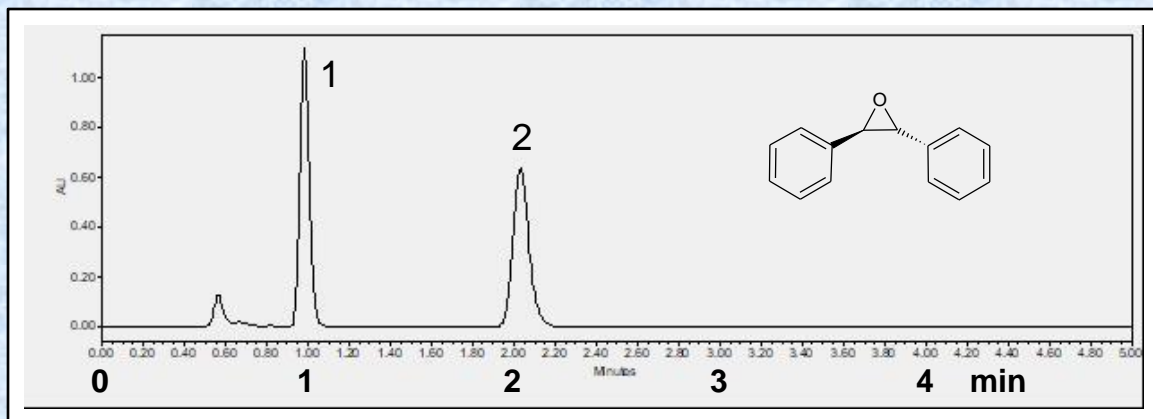


Separation of *trans*-Stilbene Oxide on Epitomize CSP-1A by UHPLC



Sample	<i>trans</i> -Stilbene Oxide [D25133]		
System	Waters Acquity, H-Class		
Column	Epitomize CSP-1A, 3 micron, 3.0 x 50 mm		
Mobile Phase	Ethanol		
Flow Rate	0.50 mL/min	Rt1 & Rt2 (min)	0.98 & 2.03
Temperature	25 °C	k1 & k2	0.91 & 2.94
Detection	UV at 230 nm	Separation Value	3.23
Injection	0.50 µL (1 mg/mL)	Resolution	9.59