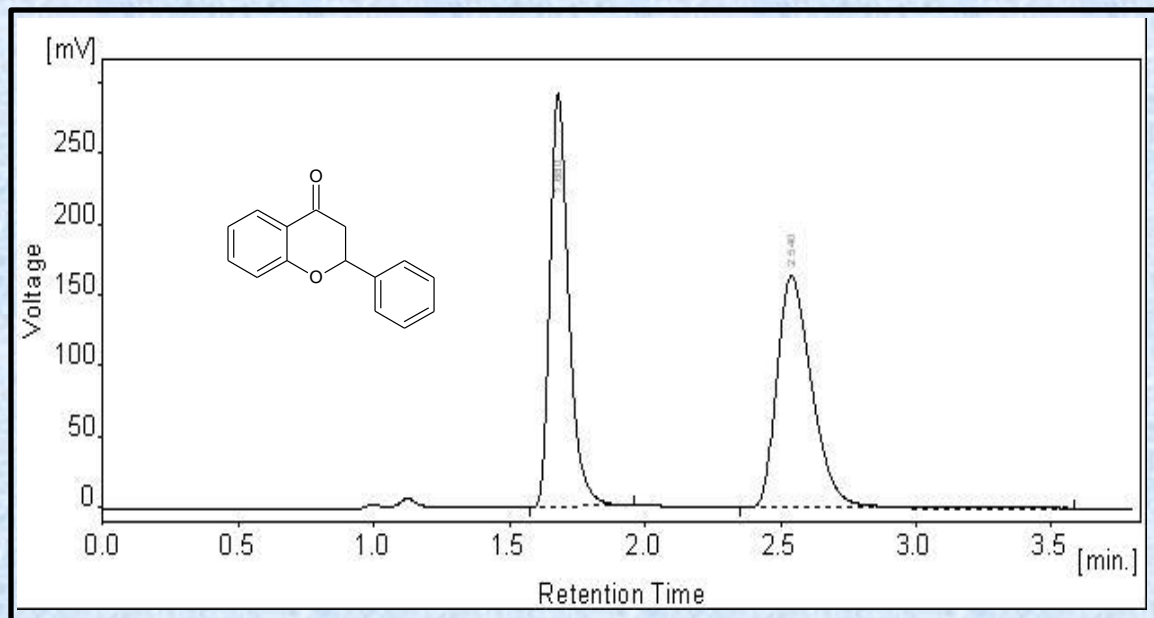


## Flavanone on Epitomize CSP-1A, 1.7 $\mu$ m, UHPLC



<b>Column</b>	CSP-1A, 1.7 micron
<b>Column Size</b>	2.1 x 50 mm
<b>Mobile Phase</b>	Methanol
<b>Flow Rate (mL/min)</b>	0.15
<b>Temperature (°C)</b>	30
<b>Detection</b>	UV at 254 nm
<b>Rt1 &amp; Rt2 (min)</b>	1.68 & 2.54
<b>k1 &amp; k2</b>	0.86 & 1.81
<b>Separation Value</b>	2.11