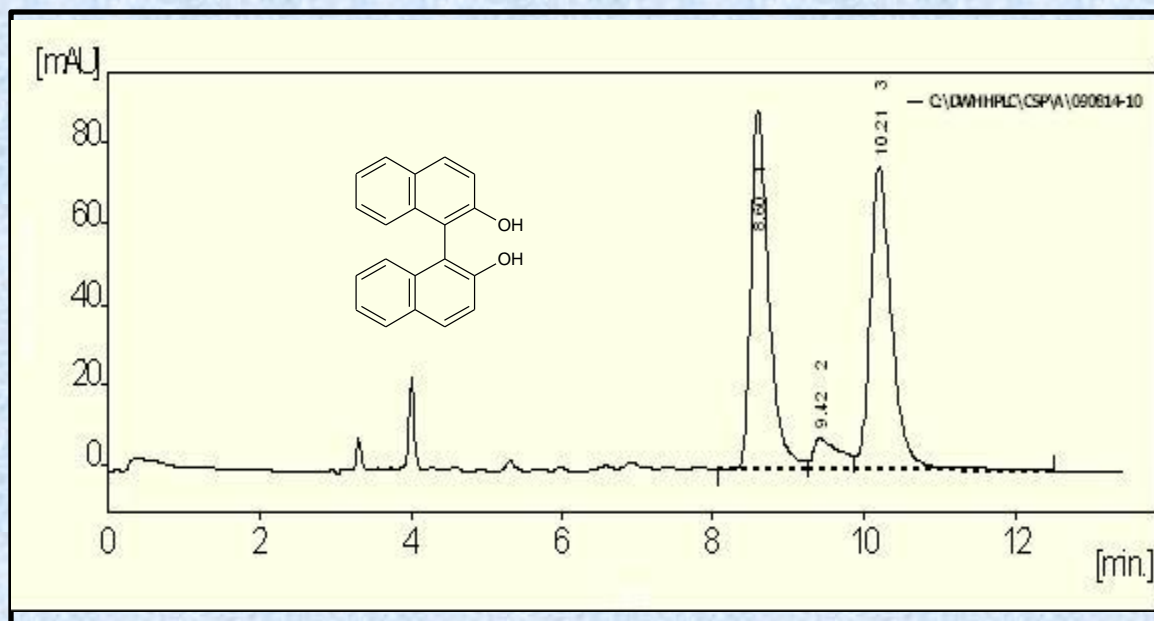


1,1'-Bi-2-naphthol

Epitomize CSP-1C, 5 μ m



Column	CSP-1C, 5 micron
Column Size	4.6 x 250 mm
Mobile Phase	90/10 heptane/2-propanol
Flow Rate (mL/min)	1.0
Temperature (°C)	29
Detection	UV at 254 nm
Rt1 & Rt2 (min)	8.60 & 10.21
k1 & k2	1.93 & 2.48
Separation Value	1.28