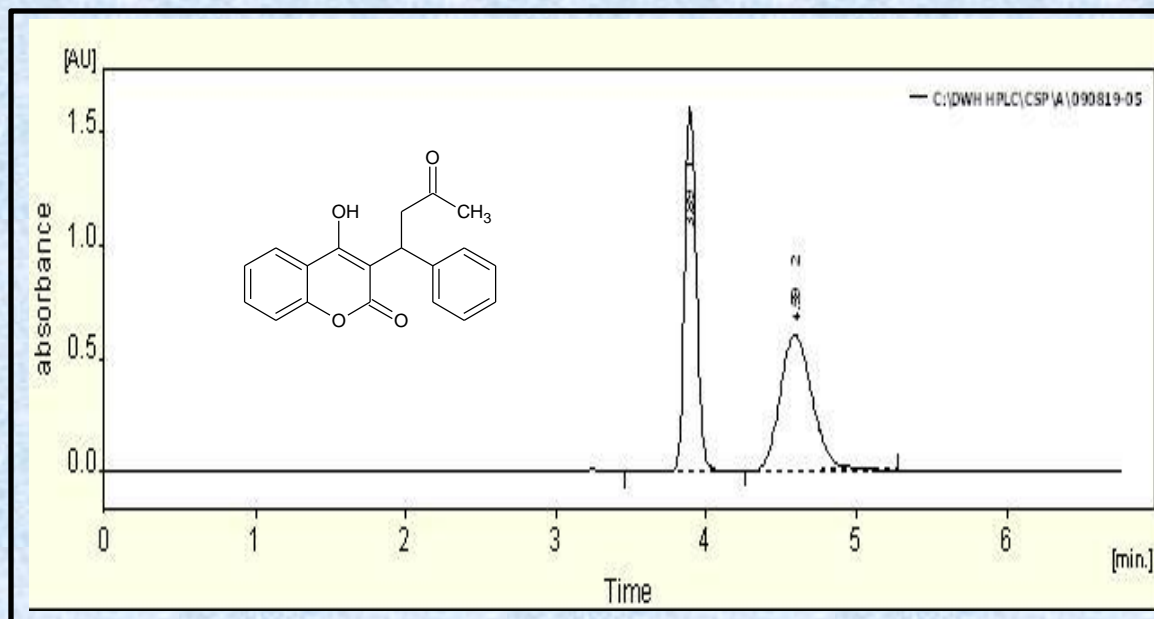


## Warfarin

### Epitomize CSP-1C, 5 $\mu$ m



<b>Column</b>	CSP-1C, 5 micron
<b>Column Size</b>	4.6 x 250 mm
<b>Mobile Phase</b>	Methanol with 0.1% TFA
<b>Flow Rate (mL/min)</b>	1.0
<b>Temperature (°C)</b>	28
<b>Detection</b>	UV at 254 nm
<b>Rt1 &amp; Rt2 (min)</b>	3.89 & 4.59
<b>k1 &amp; k2</b>	0.32 & 0.56
<b>Separation Value</b>	1.74