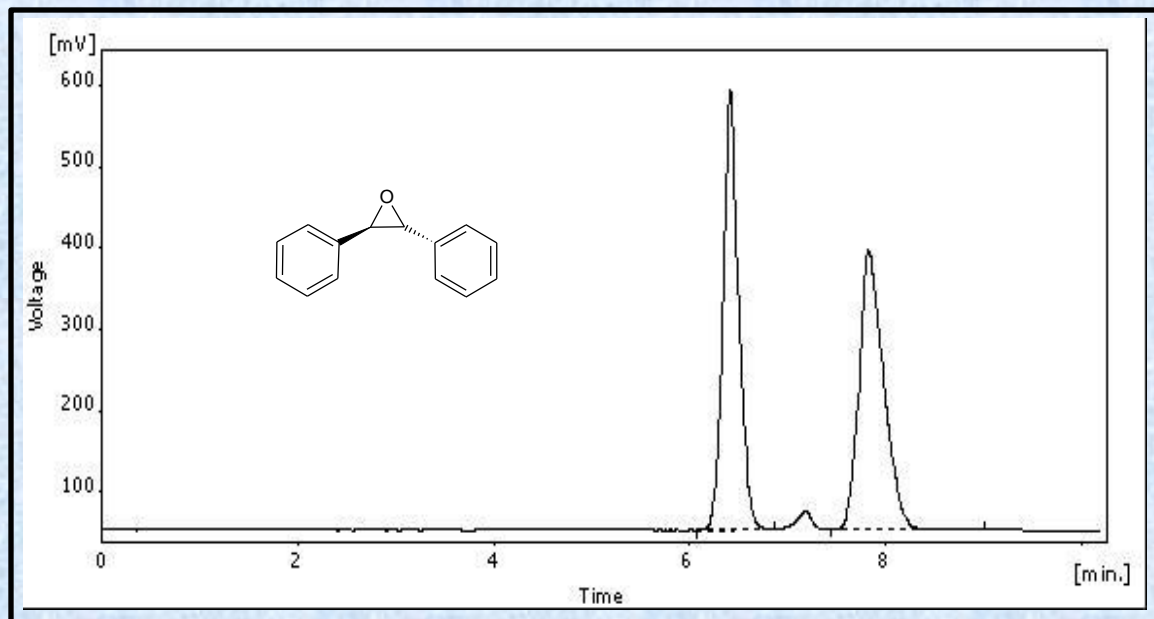


## *trans*-Stilbene Oxide on Epitomize CSP-1J, 5 $\mu$ m



<b>Column</b>	CSP-1J, 5 micron
<b>Column Size</b>	4.6 x 250 mm
<b>Mobile Phase</b>	90/10 heptane/2-propanol
<b>Flow Rate (mL/min)</b>	1.0
<b>Temperature (°C)</b>	25
<b>Detection</b>	UV at 254 nm
<b>Rt1 &amp; Rt2 (min)</b>	6.41 & 7.83
<b>k1 &amp; k2</b>	1.03 & 1.48
<b>Separation Value</b>	1.43