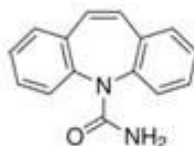


## PHOSPHOLIPID DEPLETION PLATE

Compounds: Carbamazepine



### PHOSPHOLIPID DEPLETION METHOD:

(Chastity Phospholipid depletion Plate, 2 mL/well, 0.2µm, Catalog #OC21PC-045-A)

#### Load:

300 µL of acetonitrile first, followed by 100 µL of spiked human plasma (250 ng/mL). Vortex for 2 minutes



#### Elute:

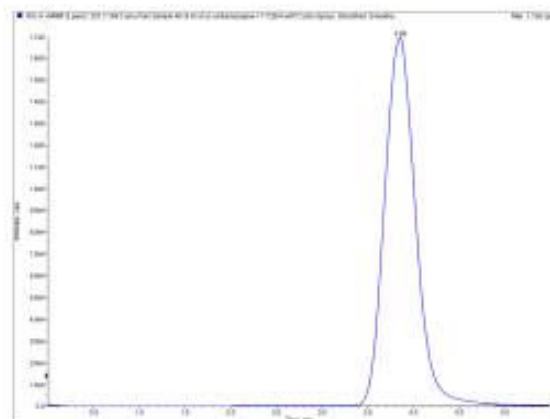
Apply a gentle stream of positive pressure until all solvent passes through. Inject directly into HPLC

### HPLC METHOD:

**Column:** Orochem Reliasil C8 HPLC column 4.6x50 mm, 3 µm.  
**Part number:** R3BI-102  
**Mobile phase:** Water/Acetonitrile 65:35  
**Flow rate:** 0.5 mL/min  
**Injection volume:** 20 µL  
**Retention Time:** 3.86 min

### MS/MS CONDITIONS:

**Mass spectrometer:** API3000  
**Ion source:** Turbo IonSpray  
**Polarity:** Positive  
**Scan mode:** MRM  
 Primary, Q1: 237.1, Q3: 194;  
 Secondary, Q1: 237.1, Q3:220.0  
**IS:** 4000  
**Temp.** 500  
**DP:** 20  
**CAD:** 12  
**CE:** 25  
**CXP:** 10



### RESULTS:

**Recovery (CV%):** 98.3% (3.4%)