

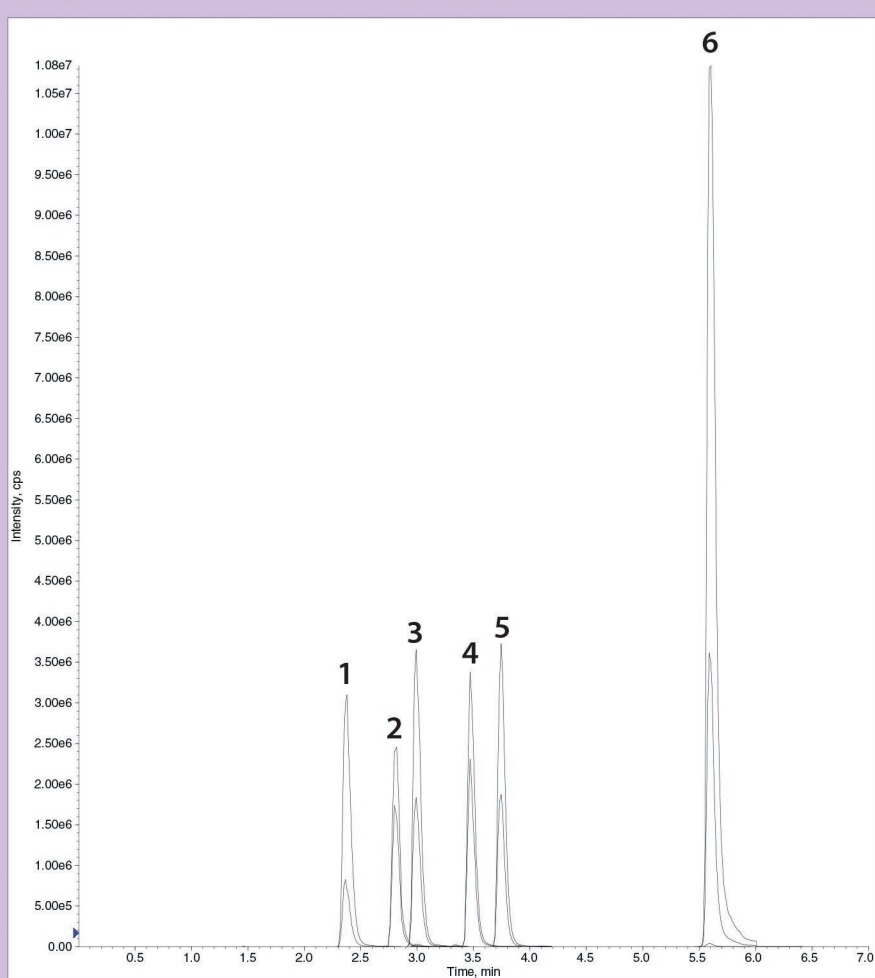
Gazelle C18™

UHPLC Column

HPLC Application Library
 Application Note: **UCHA-C18-17001**

Barbiturates and THCA Analysis by Gazelle C18

Use: Barbiturates and THCA are a common analytes in urine toxicology labs



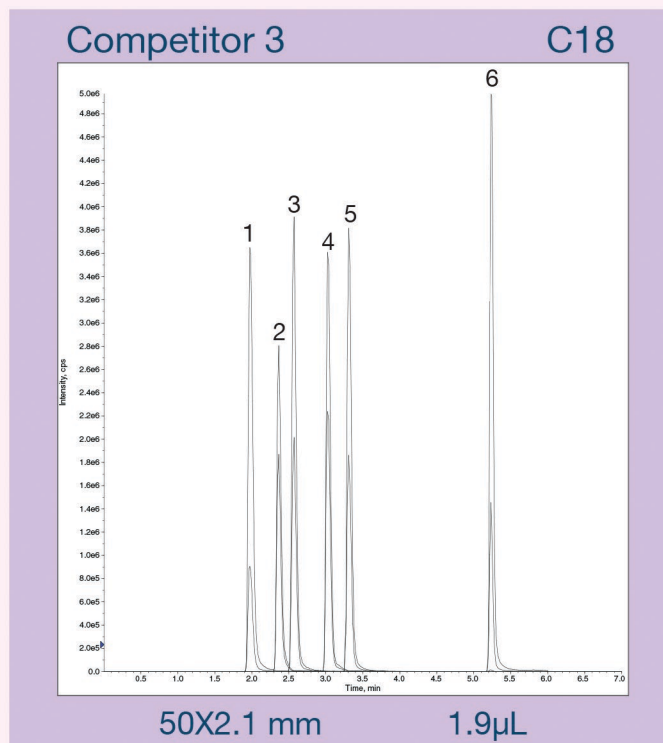
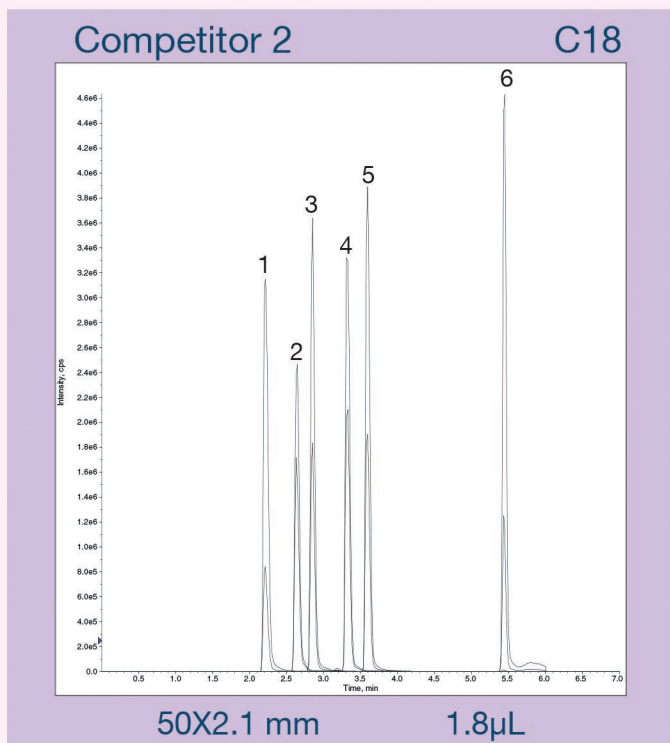
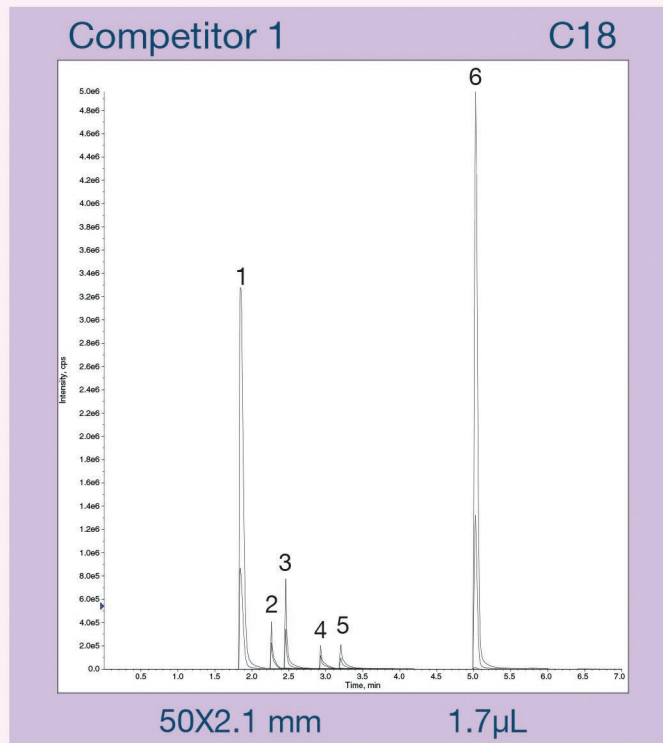
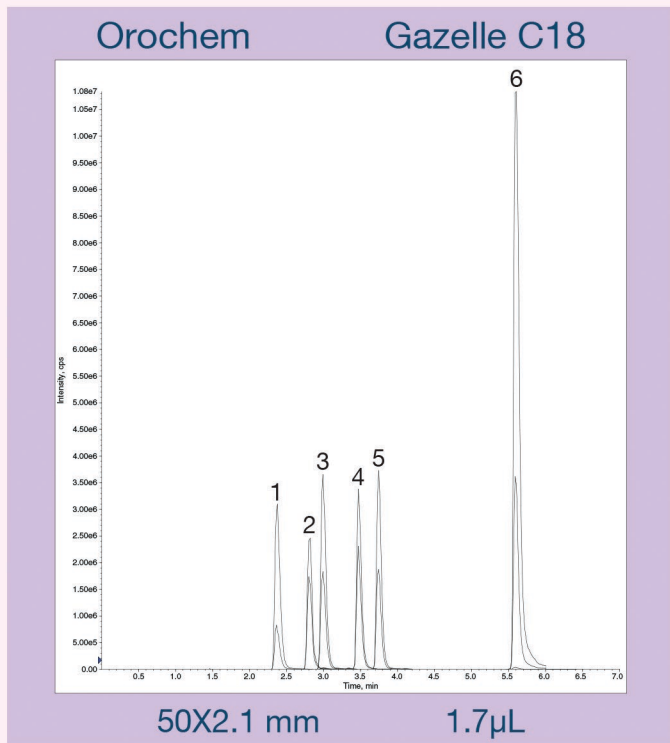
1	Phenobarbital
2	Butabarbital
3	Butalbital
4	Amobarbital
5	Secobarbital
6	THCA

UHPLC	ExcionLC
Column	Gazelle C18, 1.7 µL
Column Size	2.1 mm x 50 mm
Temperature	40 °C
Detection	API 4500 (SMRM)
Injection	20 µL

Mobile Phase	A: 0.1% Formic Acid B: 0.1% Formic Acid in Methanol	
Flow Rate	0.3 mL/min	
Gradient	Time	B
	0	30
	0.50	40
	2.50	60
	4.00	85
	4.70	85
	4.71	95
	5.60	95
	5.61	30
7.00	30	



Separation of barbiturates and THCA in urine sample by Gazelle C18 UHPLC-MS/MS



1	Phenobarbital	3	Butalbital	5	Secobarbital
2	Butabarbital	4	Amobarbital	6	THCA